

Oregon Trail



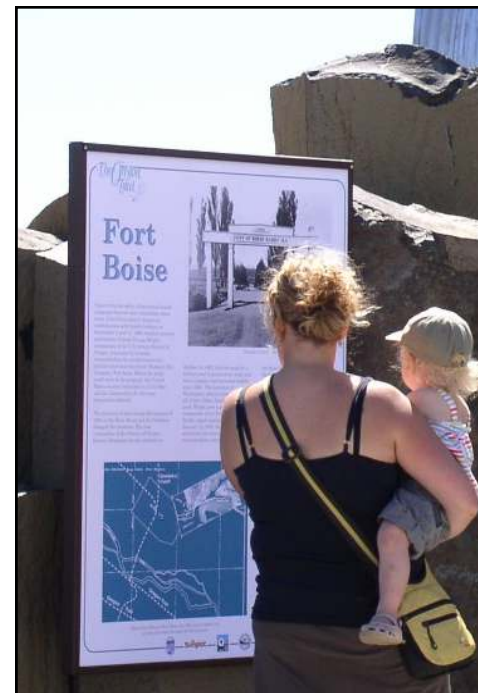
For those seeking an educational multi-use trail experience that's off the map but close to home, Ada County's new and improved Oregon Trailhead and recreation access area is the perfect option. Often overlooked by trail users since it isn't featured on the popular Ridge to Rivers map, this **unique wagon inspired trailhead** includes several educational kiosk

panels portraying the local history of the Oregon Trail. Providing an interesting historical perspective, actual wagon ruts from the 1800s are still visible on portions of the trail beyond the kiosk.

Starting from the huge parking area at the wagon, visitors have a variety of trail options for exploring **miles of scenic and sometimes rugged terrain** on foot, bike, or horse. Most trails offer stellar views of the Black Cliffs, Hammer Flat, and the foothills across Lucky Peak Canyon as well as some great bird's eye views of the Boise River and Barber Valley. If you've never been there you'll be surprised by the **massive and picturesque panorama** this location offers. With keen eyes you might also see a variety of wildlife from this vantage point including mule deer, elk, coyotes, foxes, hawks, falcons, and rabbits in addition to the human "wildlife" across the canyon — rock climbers and hang gliders.

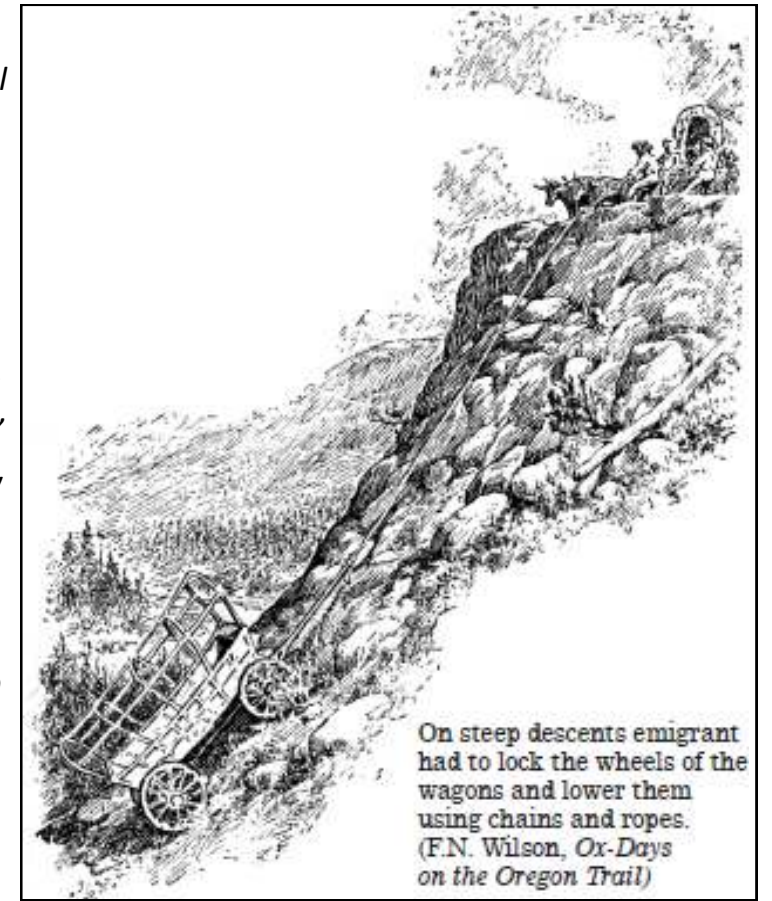
Completion of the Oregon Trail Recreation Area was the result of a collaborative effort involving Ada County, Idaho State Parks & Recreation, Idaho State Historic Preservation Office, Simplot Corporation, Idaho Transportation Department, and U.S. Bureau of Reclamation to preserve open space, trails, and cultural heritage. Now, with the recent acquisition of a separate 14 acre parcel sandwiched between two Bureau of Land Management (BLM) parcels southeast of the trailhead near Columbia Road, Ada County is initiating additional partnerships with the BLM and the City of Boise to define the future vision of a larger trail system.

Although the official ribbon cutting ceremony occurred back in 2010, the Ada County trailhead is still a new addition to a lot of folks and well worth adding to your list of trail options any time of year. When visiting please keep in mind that much of the land near the trailhead is private property that has been made available for public use by community minded landowners so **please stay on trails, pick up and pack out trash, follow all posted rules, and be a good neighbor.**

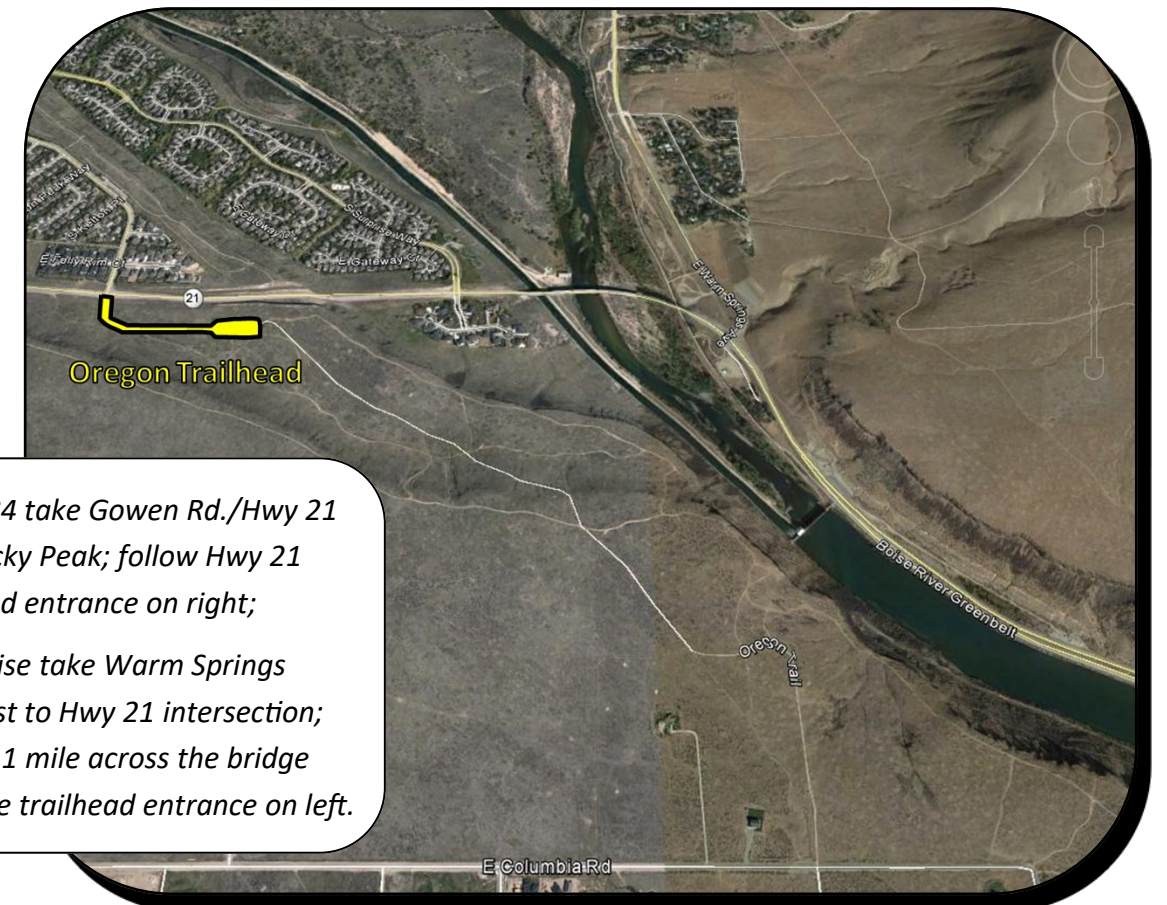


"Below, thousands of feet below, were seen the water of this beautiful river winding this tranquil course & gleaming like a thread of silver in the rays of the setting sun. The stream seemed as calm and gentle, as if it was through a meadow, instead of rugged canyons. After reaching the plain, the course of the stream is marked by a line of green timber, which gave rise to its name among early trappers 'Boisse' or 'Wooded River' — This green strip of vegetation winding its way through the desert sage plain, gave a more cheerful prospect to the view and after gazing once more on the vast map spread out before me I rapidly descended the hill — to find a camp for the tired train; but never can the recollection of the grandeur of that scene be blotted from memory — the sunset from the Big Hill of the Boisse will always be a greene spot in the past."

- Winfield Scott Ebey; August 20, 1854



On steep descents emigrant had to lock the wheels of the wagons and lower them using chains and ropes. (F.N. Wilson, *Ox-Days on the Oregon Trail*)



Directions: From I-84 take Gowen Rd./Hwy 21 exit east toward Lucky Peak; follow Hwy 21 2.5 miles to trailhead entrance on right; From downtown Boise take Warm Springs Blvd. all the way east to Hwy 21 intersection; turn right and head 1 mile across the bridge and up the hill to the trailhead entrance on left.