

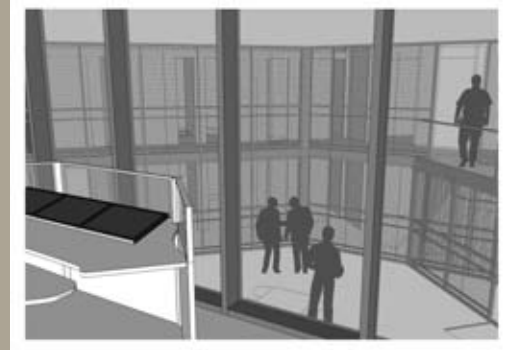


## ADA COUNTY JAIL POD D

### OVERVIEW

The Ada County Jail first opened in 1977 as part of the Ada County-Boise City Public Safety Building. It was originally designed to house 160 inmates and 32 work release prisoners. It's been expanded several times over the years resulting in an inmate capacity in 2012 of 1,144. Pod D will provide a new 88-bed maximum security unit and be constructed in an existing recreation yard area.

All inmates are classified using a specific system which is basically a risk assessment. Housing inmates by classification greatly increases the security of other inmates and jail staff. To classify an inmate, officers research the inmate's past and criminal history and their past and present behavior when in custody. Mental or physical disabilities are also considered to determine appropriate housing.



### HIGHLIGHTS

**Location:** 7200 Barrister Rd.  
Boise, Idaho

**Facility:** 14,000 sq. ft. Pod D

**Architect:** Lombard Conrad Architects

**General Contractor:** Scott Hedrick Construction, Inc.

**Completion:** June 2013

**Project Cost:** \$4.3 Million

### INFO CONTACT

**Ada County Operations**  
Dave Logan, Director  
Bruce Krisko, Construction Manager  
Telephone: (208) 287-7100  
Email: [bkrisko@adaweb.net](mailto:bkrisko@adaweb.net)

**Ada County Sheriff's Office**  
Telephone: (208) 577-3000  
[www.adasheriff.org](http://www.adasheriff.org)

### MAIN FEATURES

- 88-Bed Maximum-Security Unit
- 3 Day Rooms
- 2 Outdoor Exercise Areas

### PROJECT BENEFITS

- New housing for the more violent offenders
- Reduced risk to inmates and staff by keeping violent offenders away from the general population
- Increased effectiveness of the behavioral housing plan

