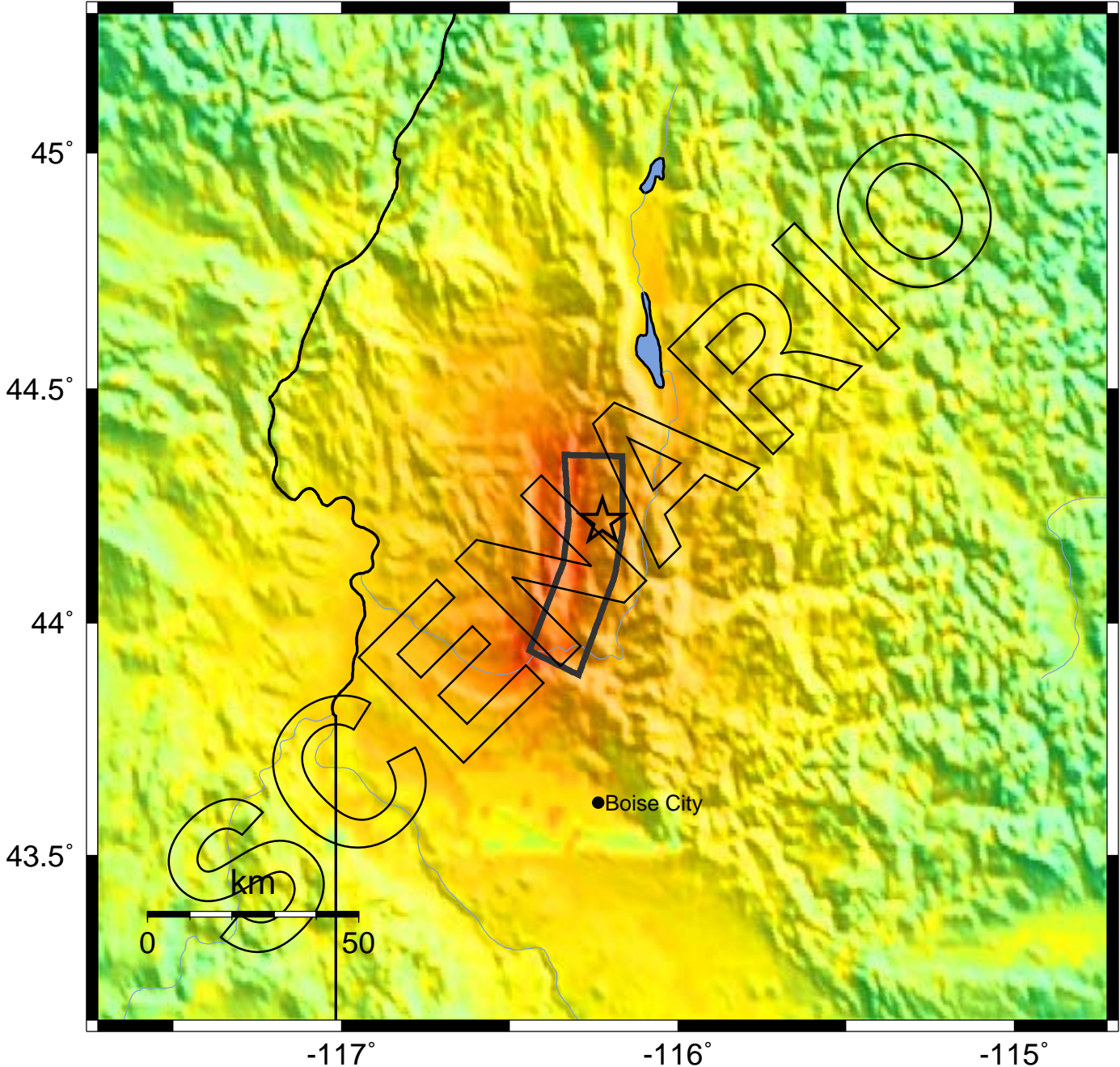


-- Earthquake Planning Scenario --  
 ShakeMap for Squaw\_Creek\_7.0 Scenario

Scenario Date: JAN 1 2012 12:00:00 AM GMT M 7.0 N44.22 W116.22 Depth: 15.0km



PLANNING SCENARIO ONLY -- Map Version 1 Processed Fri Dec 2, 2011 02:45:48 PM MST

PERCEIVED SHAKING	Not felt	Weak	Light	Moderate	Strong	Very strong	Severe	Violent	Extreme
POTENTIAL DAMAGE	none	none	none	Very light	Light	Moderate	Mod./Heavy	Heavy	Very Heavy
PEAK ACC.(%g)	<0.03	0.3	2.8	6.2	12	22	40	75	>139
PEAK VEL.(cm/s)	<0.01	0.1	1.4	4.7	9.6	20	41	86	>178
INSTRUMENTAL INTENSITY	I	II-III	IV	V	VI	VII	VIII	IX	X+

Scale based upon Worden et al. (2011)