

Sample Ballot – Ada County, Idaho General Election – November 8, 2022

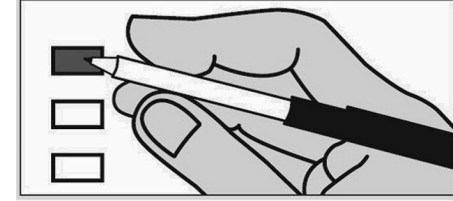
- This sample ballot contains the candidates and ballot question(s) for the General Election of November 8, 2022
- Voter specific precinct, congressional and legislative district information can be located at www.adacounty.id.gov/elections
- NOTE: The order of the candidates on this sample ballot may not necessarily reflect the rotation on your ballot

OFFICIAL GENERAL ELECTION BALLOT November 8, 2022 ADA COUNTY, IDAHO

INSTRUCTIONS TO VOTER
To vote, completely fill in the box next to the candidate or measure of your choice with a black or blue ink pen.

To write in a candidate, fill in the box to the left of "Write-in" and print the name clearly on the dotted line.

If you make a mistake, request a new ballot from an Election worker.



CANDIDATES FOR UNITED STATES OFFICES

UNITED STATES SENATOR

- (Vote for One)
- Scott Oh Cleveland IND
- Mike Crapo REP
- David Roth DEM
- Idaho Sierra Law (Also Known as Carta Reale Sierra) LIB

Ray J. Writz CON

Write-in

REPRESENTATIVE IN CONGRESS FIRST DISTRICT

- (Vote for One)
- Darian Drake LIB
- Russ Fulcher REP
- Kaylee Peterson DEM
- Write-in

REPRESENTATIVE IN CONGRESS SECOND DISTRICT

- (Vote for One)
- Wendy Norman DEM
- Mike Simpson REP
- Write-in

CANDIDATES FOR STATE OFFICES

GOVERNOR

- (Vote for One)
- Ammon Bundy IND
- Chantrose Davison CON
- Stephen Heidt DEM
- Brad Little REP
- Paul Sand LIB
- Write-in

LIEUTENANT GOVERNOR

- (Vote for One)
- Scott Bedke REP
- Terri Pickens Manweiler DEM
- Pro-Life (A person, formerly known as Marvin Richardson) CON
- Write-in

SECRETARY OF STATE

- (Vote for One)
- Shawn Keenan DEM
- Phil McGrane REP
- Write-in

STATE CONTROLLER

- (Vote for One)
- Dianna David DEM
- Miste Gardner CON
- Brandon D Woolf REP
- Write-in

STATE TREASURER

- (Vote for One)
- Julie A. Ellsworth REP
- Deborah Silver DEM
- Write-in

ATTORNEY GENERAL

- (Vote for One)
- Tom Arkoosh DEM
- Raúl R. Labrador REP
- Write-in

SUPERINTENDENT OF PUBLIC INSTRUCTION

- (Vote for One)
- Debbie Critchfield REP
- Terry L. Gilbert DEM
- Write-in

CANDIDATES FOR LEGISLATIVE DISTRICT OFFICES

STATE SENATOR LEGISLATIVE DISTRICT 10

- (Vote for One)
- Tammy Nichols REP
- Bob Solomon DEM
- Write-in

STATE REPRESENTATIVE LEGISLATIVE DISTRICT 10 POSITION A

- (Vote for One)
- Mike Moyle REP
- Write-in

STATE REPRESENTATIVE LEGISLATIVE DISTRICT 10 POSITION B

- (Vote for One)
- Bruce D. Skaug REP
- Write-in

CANDIDATES FOR LEGISLATIVE DISTRICT OFFICES

STATE SENATOR LEGISLATIVE DISTRICT 14

- (Vote for One)
- C. Scott Grow REP
- Robert Imhoff LIB
- Kirsten Faith Richardson CON
- Write-in

STATE REPRESENTATIVE LEGISLATIVE DISTRICT 14 POSITION A

- (Vote for One)
- Crystal Ivie DEM
- Ted Hill REP
- Write-in

STATE REPRESENTATIVE LEGISLATIVE DISTRICT 14 POSITION B

- (Vote for One)
- Josh Tanner REP
- Shelley Brock DEM
- Write-in

CANDIDATES FOR LEGISLATIVE DISTRICT OFFICES

STATE SENATOR LEGISLATIVE DISTRICT 15

- (Vote for One)
- Sarah A. Clendenon CON
- Codi Galloway REP
- Rick Just DEM
- Write-in

STATE REPRESENTATIVE LEGISLATIVE DISTRICT 15 POSITION A

- (Vote for One)
- Steve Berch DEM
- Steve Keyser REP
- Write-in

STATE REPRESENTATIVE LEGISLATIVE DISTRICT 15 POSITION B

- (Vote for One)
- Dori Healey REP
- Jeff Nafsinger DEM
- Write-in

CANDIDATES FOR LEGISLATIVE DISTRICT OFFICES

STATE SENATOR LEGISLATIVE DISTRICT 16

- (Vote for One)
- Dennis Mansfield REP
- Ali Rabe DEM
- Write-in

STATE REPRESENTATIVE LEGISLATIVE DISTRICT 16 POSITION A

- (Vote for One)
- Mark A Montoya REP
- Wayne Richey IND
- Soñia Galaviz DEM
- Write-in

STATE REPRESENTATIVE LEGISLATIVE DISTRICT 16 POSITION B

- (Vote for One)
- Jackie Davidson REP
- Colin Nash DEM
- Write-in

CANDIDATES FOR LEGISLATIVE DISTRICT OFFICES

STATE SENATOR LEGISLATIVE DISTRICT 17

- (Vote for One)
- Benjamin Donovan Chafetz REP
- Carrie Semmelroth DEM
- Write-in

STATE REPRESENTATIVE LEGISLATIVE DISTRICT 17 POSITION A

- (Vote for One)
- John Gannon DEM
- April Larson REP
- Write-in

STATE REPRESENTATIVE LEGISLATIVE DISTRICT 17 POSITION B

- (Vote for One)
- Sue Chew DEM
- Mary Ellen Nourse REP
- Write-in

CANDIDATES FOR LEGISLATIVE DISTRICT OFFICES

STATE SENATOR LEGISLATIVE DISTRICT 18

- (Vote for One)
- Dan Bridges REP
- Janie Ward-Engelking DEM
- Write-in

STATE REPRESENTATIVE LEGISLATIVE DISTRICT 18 POSITION A

- (Vote for One)
- MaryKate Johnson REP
- Ilana Rubel DEM
- Write-in

STATE REPRESENTATIVE LEGISLATIVE DISTRICT 18 POSITION B

- (Vote for One)
- Brooke Green DEM
- Gregory T Holtz REP
- Write-in

CANDIDATES FOR LEGISLATIVE DISTRICT OFFICES

STATE SENATOR LEGISLATIVE DISTRICT 19

- (Vote for One)
- Blair Moss REP
- Melissa Wintrow DEM
- Write-in

STATE REPRESENTATIVE LEGISLATIVE DISTRICT 19 POSITION A

- (Vote for One)
- Melissa J. Christian REP
- Lauren Necochea DEM
- Write-in

STATE REPRESENTATIVE LEGISLATIVE DISTRICT 19 POSITION B

- (Vote for One)
- James Faasau REP
- Chris Mathias DEM
- Write-in

CANDIDATES FOR LEGISLATIVE DISTRICT OFFICES

STATE SENATOR LEGISLATIVE DISTRICT 20

- (Vote for One)
- Chuck Winder REP
- Write-in

STATE REPRESENTATIVE LEGISLATIVE DISTRICT 20 POSITION A

- (Vote for One)
- Joe Palmer REP
- Write-in

STATE REPRESENTATIVE LEGISLATIVE DISTRICT 20 POSITION B

- (Vote for One)
- James D Holtzclaw REP
- Write-in

CANDIDATES FOR LEGISLATIVE DISTRICT OFFICES

STATE SENATOR LEGISLATIVE DISTRICT 21

- (Vote for One)
- Treg A. Bernt REP
- Monica McKinley CON
- Write-in

STATE REPRESENTATIVE LEGISLATIVE DISTRICT 21 POSITION A

- (Vote for One)
- Josi Christensen DEM
- Mike Long LIB
- James Petzke REP
- Daniel Weston CON
- Write-in

STATE REPRESENTATIVE LEGISLATIVE DISTRICT 21 POSITION B

- (Vote for One)
- Jeff Ehlers REP
- Write-in

CANDIDATES FOR LEGISLATIVE DISTRICT OFFICES

STATE SENATOR LEGISLATIVE DISTRICT 22

- (Vote for One)
- Lori Den Hartog REP
- Brendan J. Gomez CON
- Pat Soulliere DEM
- Write-in

STATE REPRESENTATIVE LEGISLATIVE DISTRICT 22 POSITION A

- (Vote for One)
- John Vander Woude REP
- Natalie R. MacLachlan DEM
- Write-in

STATE REPRESENTATIVE LEGISLATIVE DISTRICT 22 POSITION B

- (Vote for One)
- Dawn Pierce DEM
- Jason A. Monks REP
- Write-in

CANDIDATES FOR LEGISLATIVE DISTRICT OFFICES

STATE SENATOR LEGISLATIVE DISTRICT 23

- (Vote for One)
- Jon Basabe LIB
- Todd Lakey REP
- Mik Lose DEM
- Write-in

STATE REPRESENTATIVE LEGISLATIVE DISTRICT 23 POSITION A

- (Vote for One)
- Melissa Durrant REP
- Write-in

STATE REPRESENTATIVE LEGISLATIVE DISTRICT 23 POSITION B

- (Vote for One)
- Tina Lambert REP
- Write-in

CANDIDATES FOR COUNTY OFFICES

COUNTY COMMISSIONER SECOND DISTRICT - 4 year term

- (Vote for One)
- Rod W Beck REP
- Stan Ridgeway DEM
- Write-in

COUNTY COMMISSIONER THIRD DISTRICT - 2 year term

- (Vote for One)
- Tom Dayley REP
- Anthony (Tony) Jones IND
- Patricia Nilsson DEM
- Write-in

COUNTY SHERIFF - 2 year term

- (Vote for One)
- Matthew Clifford REP
- Victor McCraw DEM
- Write-in

CLERK OF THE DISTRICT COURT

- (Vote for One)
- Trent Triple REP
- Write-in

COUNTY TREASURER

- (Vote for One)
- Elizabeth "Beth" Mahn REP
- Write-in

COUNTY ASSESSOR

- (Vote for One)
- Rebecca Arnold REP
- Erik Steven Berg DEM
- Write-in

COUNTY CORONER

- (Vote for One)
- Dotti Owens DEM
- Rich Riffle REP
- Write-in

NONPARTISAN BALLOT

FOURTH JUDICIAL DISTRICT COURT JUDGES

- MAGISTRATE ADAM C. KIMBALL**
Shall Magistrate Adam C. Kimball of Ada County of the Fourth Judicial District be retained in office?
 YES
 NO

- MAGISTRATE JILL S. JURRIES**
Shall Magistrate Jill S. Jurries of Ada County of the Fourth Judicial District be retained in office?
 YES
 NO

- MAGISTRATE THEODORE TOLLEFSON**
Shall Magistrate Theodore Tollefson of Ada County of the Fourth Judicial District be retained in office?
 YES
 NO

- MAGISTRATE MICHAEL WARREN LOJER**
Shall Magistrate Michael Warren Lojer of Ada County of the Fourth Judicial District be retained in office?
 YES
 NO

- MAGISTRATE Fafa ALIDJANI**
Shall Magistrate Fafa Alidjani of Ada County of the Fourth Judicial District be retained in office?
 YES
 NO

2022 ADA COUNTY LEGISLATIVE DISTRICTS AND PRECINCTS 197 PRECINCTS

| | 1st Congressional District Precincts | 2nd Congressional District Precincts |
|-------------------------|--|--|
| Legislative District 10 | 1001, 1002, 1003, 1004, 1005, 1006 | |
| Legislative District 14 | 1401, 1402, 1403, 1404, 1405, 1406, 1407, 1408, 1409, 1410, 1411, 1412, 1413, 1414, 1415 | 1416, 1417 |
| Legislative District 15 | | 1501, 1502, 1503, 1504, 1505, 1506, 1507, 1508, 1509, 1510, 1511, 1512, 1513, 1514, 1515, 1516, 1517, 1518, 1519, 1520 |
| Legislative District 16 | | 1601, 1602, 1603, 1604, 1605, 1606, 1607, 1608, 1609, 1610, 1611, 1612, 1613, 1614, 1615, 1616, 1617, 1618, 1619 |
| Legislative District 17 | | 1701, 1702, 1703, 1704, 1705, 1706, 1707, 1708, 1709, 1710, 1711, 1712, 1713, 1714, 1715, 1716, 1717, 1718, 1719 |
| Legislative District 18 | 1819 | 1801, 1802, 1803, 1804, 1805, 1806, 1807, 1808, 1809, 1810, 1811, 1812, 1813, 1814, 1815, 1816, 1817, 1818, 1820 |

| | 1st Congressional District Precincts | 2nd Congressional District Precincts |
|-------------------------|--|--|
| Legislative District 19 | | 1901, 1902, 1903, 1904, 1905, 1906, 1907, 1908, 1909, 1910, 1911, 1912, 1913, 1914, 1915, 1916, 1917, 1918, 1919, 1920, 1921, 1922, 1923, 1924, 1925, 1917, 1918, 1919, 1920 |
| Legislative District 20 | 2001, 2002, 2003, 2004, 2005, 2006, 2007, 2008, 2009, 2010, 2011, 2012, 2013, 2014, 2015, 2016, 2017, 2018, 2019, 2020 | |
| Legislative District 21 | 2101, 2102, 2103, 2104, 2105, 2106, 2107, 2108, 2109, 2110, 2111, 2112, 2113, 2114, 2115, 2116, 2117, 2118, 2119 | 2120 |
| Legislative District 22 | 2201, 2202, 2203, 2204, 2205, 2206, 2207, 2208, 2209, 2210, 2211, 2212, 2213, 2214, 2215, 2216, 2217, 2218, 2219, 2220, 2221 | |
| Legislative District 23 | 2301, 2302, 2303, 2304, 2305, 2306, 2307, 2308, 2309, 2310 | |