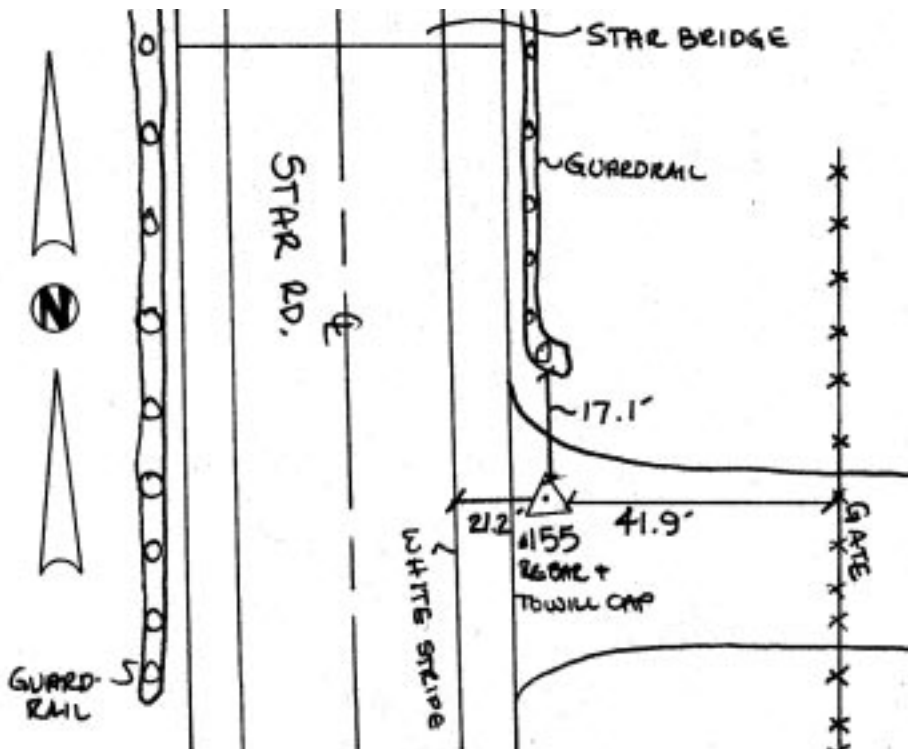


Reference
Mark ID
Number

Description

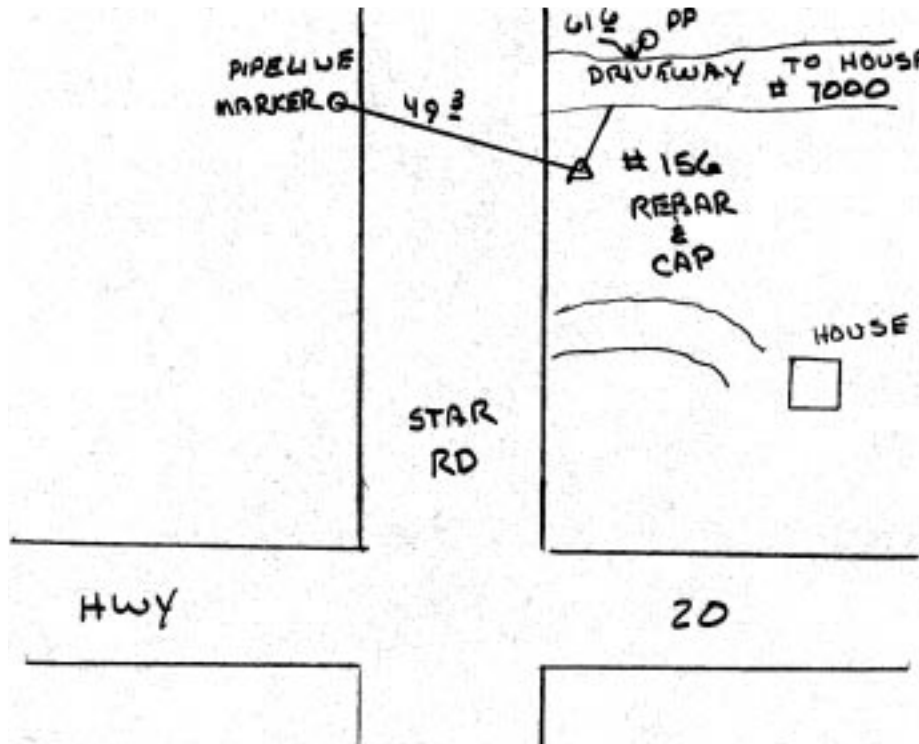
- 155 ±1 mile south of Star. The station is located 1.2 mile north on Star Road from the intersection of Star Road and Chinden Blvd. (Highway 20 and Highway 26). The station is a rebar with 1 1/2 inch Towill aluminum cap stamped, Towill, Inc. Concord CA, 155, set flush. Located on the east side of Star Road at frontage road, just south of Star Bridge. It is 41.2 feet west of gate and fence of Frontage Road, 21.2 feet east of white shoulder stripe of north bound lane, east side of Star Road. 17.1 feet southeast of east guard rail on Star Road.



Reference
Mark ID
Number

Description

- 156 ±2 miles south of Star. From the intersection of Star Road and Highway 20, go northerly on Star Road for approximately 2000 feet. The station is rebar with Towill cap stamped, Towill, Inc. Concord CA, 156, set flush. Located 61.6 feet southwest of power pole No. 98 and 49.3 feet southeast of a pipeline marker with a 12 foot pole behind it.

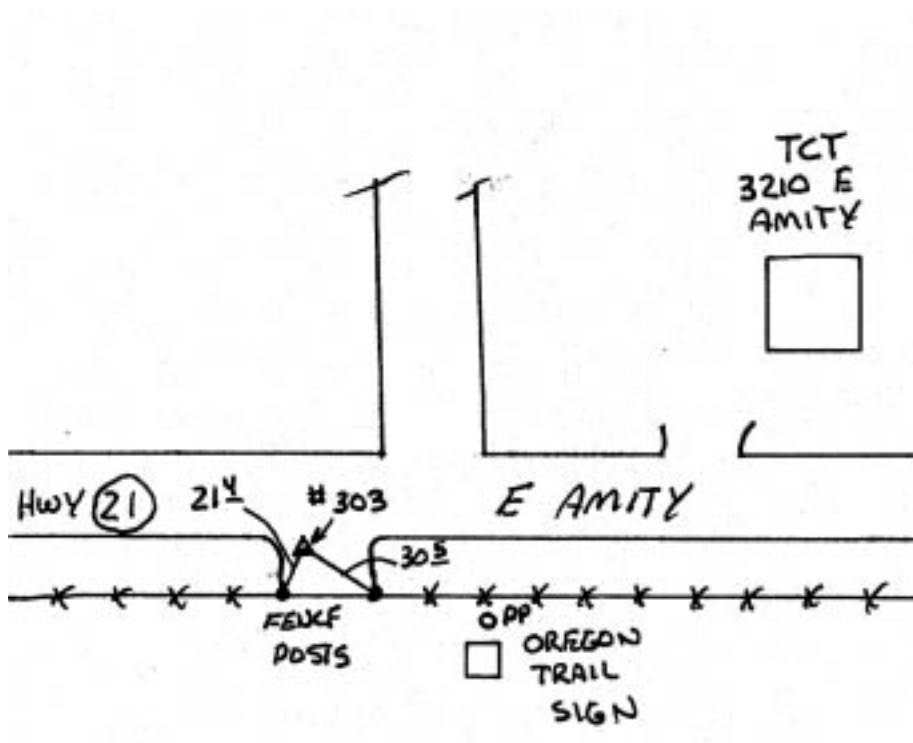


- 157 In Ada County, ±5 miles southeast of downtown Boise, near Barber Dam. From Healy Lane and Boise River Road, go easterly on Boise River Road for 0.46 mile to the station in the middle of the road. The station is a rebar and 1 1/2 inch Towill aluminum cap stamped, Towill, Inc. Concord CA, 157, set flush. Located 63.6 feet southeast of power pole and 12.0 south of a barbed wire fence. It is ±200 feet west of a driveway going north and gated road going east.

Reference
Mark ID
Number

Description

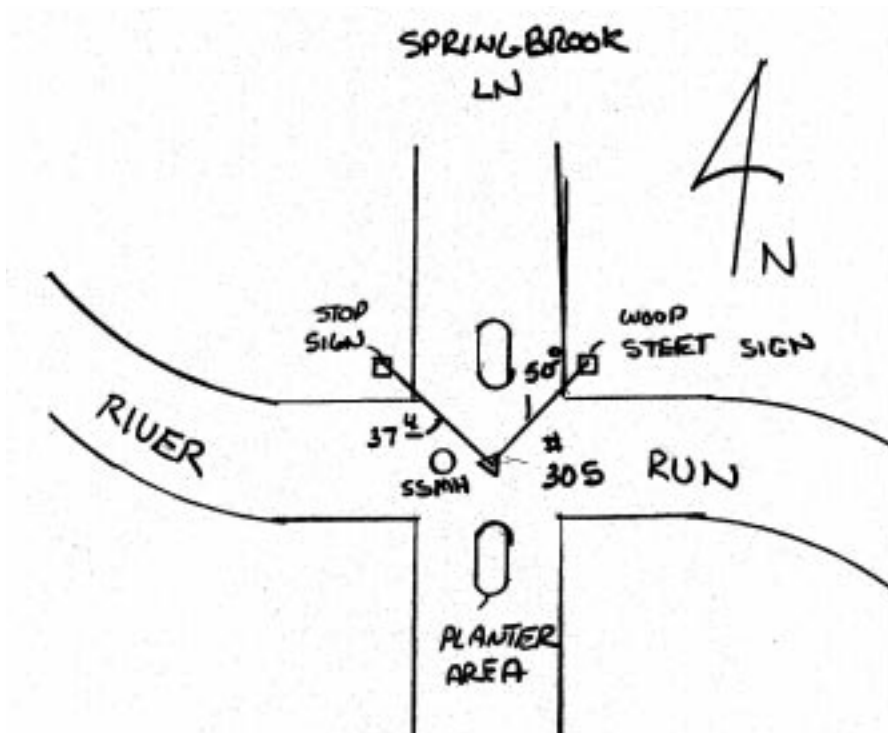
303 ±1 mile west of Barber Dam, southeast of Boise and ±1.3 miles east of Federal Way. Located on the south side of East Amity, approximately 200 feet west of building No. 3210. The station is a rebar with 1 1/2 inch Towill aluminum cap stamped, Towill, Inc. Concord CA, 303, set flush. It is 21.4 feet north of a steel gate post and 30.5 feet northwest of another steel gate post. A sign for The Oregon Trail is approximately 70 feet southeast of the station.



Reference
Mark ID
Number

Description

- 305 In southeast Boise. From Parkcenter Boulevard and River Run Road, go easterly on River Run Road to Springbrook Lane and the station located in the center of the intersection. The station is a rebar with 1 1/2 inch Towill aluminum cap stamped, Towill, Inc. Concord CA, 305, set flush. It is 37.4 feet southeast of a STOP sign and 50.0 feet southwest of the Springbrook Lane sign on the northeast corner of intersection.

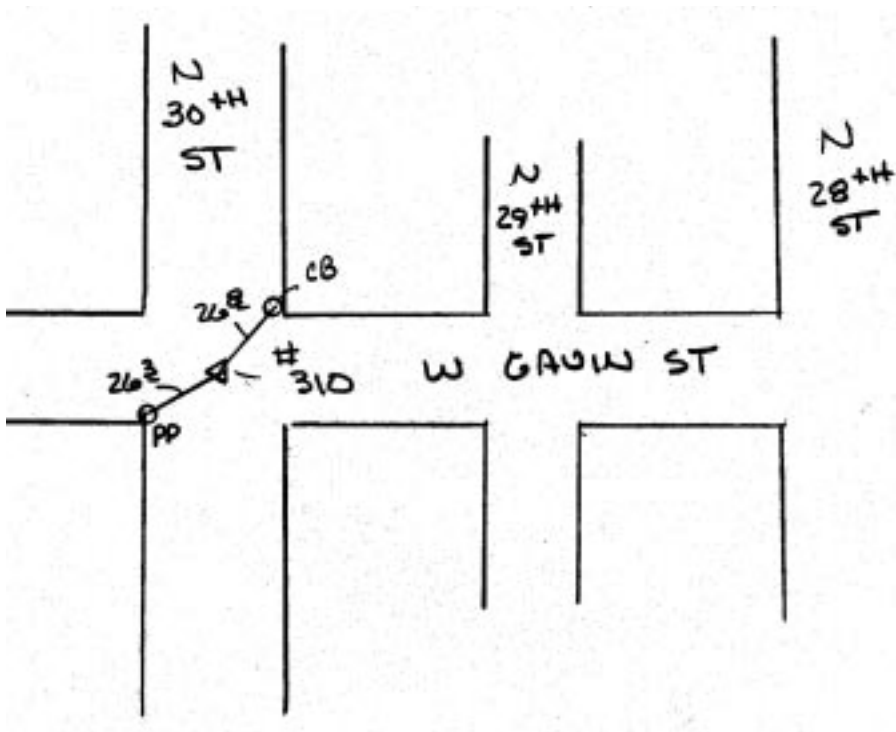


- 309 In downtown Boise. The station is a Towill, 1 1/8 inch brass disk, stamped 309. It is set flush in the north curb of Crescent Rim Drive. It is 95 feet west of the centerline of north Ruby Street. 82 feet west of a manhole at Ruby and Crescent, 102.1 feet west of junction pole No. 45280A. The station is opposite the sidewalk entrance to house No. 2801 from Crescent Drive. 27.0 feet from the centerline of walk and the edge of the pavement. 69.1 feet east of a power pole and 6.6 feet south of guard rail.

Reference
Mark ID
Number

Description

- 310 In downtown Boise. From North 28th Street and State Street, go north on 28th Street for 0.47 mile to West Gavin Street. Go west on West Gavin Street for 0.11 mile to North 30th Street and the station in the middle of the intersection. The station is a found 3 inch brass disk, set flush in concrete. It is southwest of a catch basin and north-east of power pole No. 12300A.

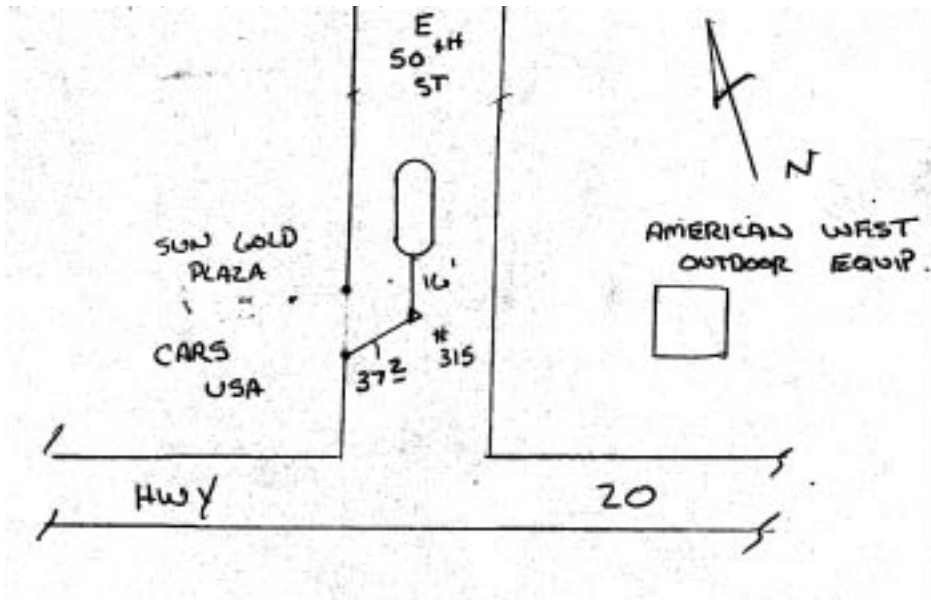


- 311 In downtown Boise. From North State Street, go southwest on Rose to two Idaho Department of Transportation buildings on state property, at the end of the road. The station is a rebar with a 2 1/2 inch Towill aluminum cap stamped, Towill, Inc. Concord CA, 311, set flush. The station is located 335.6 feet south of the southeast corner of the building No. 867. It is 6.9 feet north of a chain link fence. 7.0 feet north of a chain link fence post. On the projection of a line of two power poles, on a spit of land in the lake, and a chain link fence post. 162.4 feet south-southwest of a fence corner at the end of Rose. 100 feet north of a small lake.

Reference
Mark ID
Number

Description

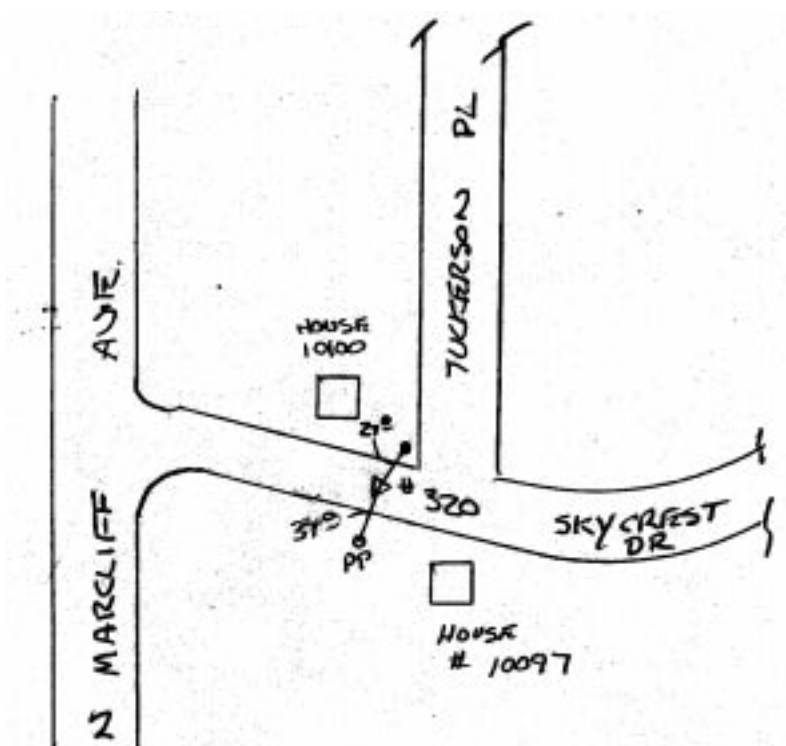
- 315 In northwest Boise. The station is a rebar and 1 1/2 inch Towill aluminum cap set flush. The cap is stamped, Towill, Inc. Concord, CA, 315. It is located approximately 120 feet north of Highway 20 on East 50th Street. It is 16.1 feet southerly of a concrete median and 37.2 feet southeast of a 3.0 feet high steel gatepost that leads into Sun Gold Plaza Cars/USA.



Reference
Mark ID
Number

Description

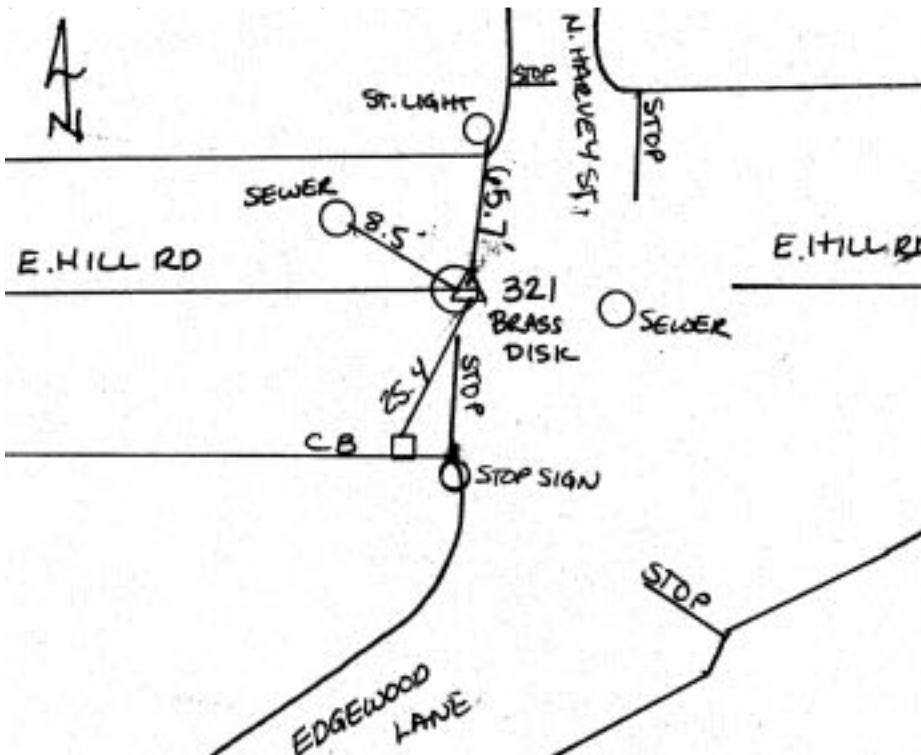
320 In west Boise. From Highway 20 and Mountain View, go southeasterly on Mount View to Sunderland Road. Go south on Sunderland to Sky Cliffe. Go west on Sky Cliffe to Tuckerson. Go southwest on Tuckerson to Skycrest. The station is a rebar and 1 1/2 inch Towill aluminum cap stamped, Towill Inc. Concord CA, 320, set flush. It is located 50.0 feet westerly of the intersection. It is 27.0 feet northeast of power pole No. 46420A and 37.0 feet southeast of a street sign.



Reference
Mark ID
Number

Description

321 ±1 mile east of Eagle. From Highway 44 in Eagle, go north on Highway 55 for 0.7 mile to Hill Road, turn left and go 0.85 mile west to the station on the left at the three-way intersection of East Hill Road, North Harvey Street and Edgewood Lane. The station is a 1 1/8 inch brass disk stamped, Towill, Inc. Concord CA, 321, set flush. Located in the concrete around a manhole in the centerline of Hill Road at the end of the yellow double stripe. It is 65.7 feet southwest of a street light. 34.9 feet northwest of a stop sign. 25.4 feet northeast of a catch basin and 8.5 feet southeast of sewer manhole.

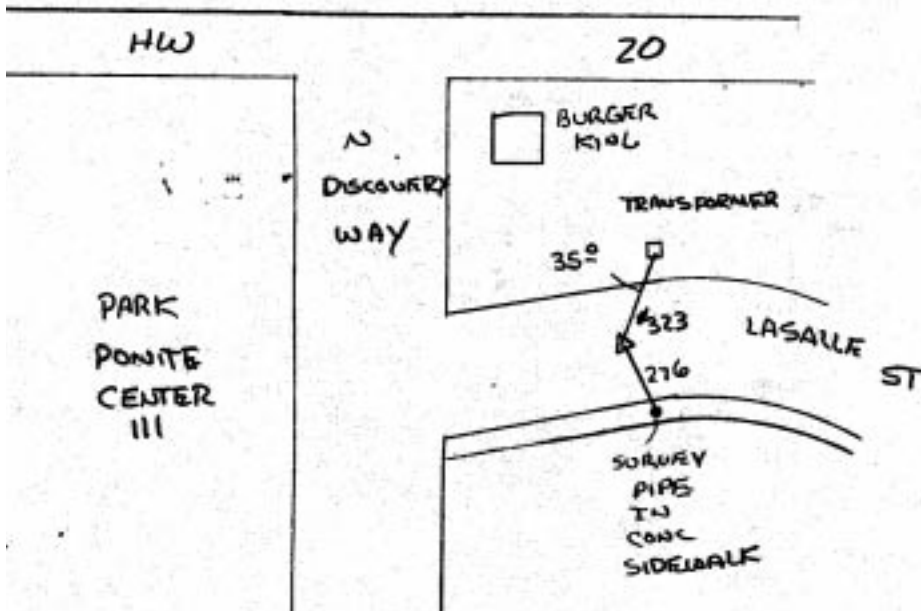


322 ±2 miles southeast of Eagle. From Highway 55, go east on Highway 20 for 0.94 mile to Joplin Road, turn left and go 0.35 mile to the West Boise Wastewater Treatment Plant entrance. Turn left and go 0.25 mile to a T-intersection. Turn left and go west for 0.16 mile to a turn north. Go north for 0.28 mile along west side of sludge ponds to a T-intersection. Turn left and go west 250 feet, passing through a gate, to the station on the right. The station is a rebar with a 2 1/2 inch Towill aluminum cap stamped, Towill, Inc. Concord CA, 322, set flush. It is located at the northwest corner of the West Boise Wastewater Treatment Plant. It is 27.1 feet northwest of a gate valve, on the north side of a concrete culvert over a canal, along the west side of the property. It is 35.4 feet north of the gate post on the center of the south side of the culvert, 29.5 feet east of the south gate post of a road going west along creek on north and open field on south. 13 feet northeast of center line of dirt road. 7.5 feet west of the center-line of a dirt road going to fenced enclosure on the edge of the river. 6 feet southwest of the top of bank.

Reference
Mark ID
Number

Description

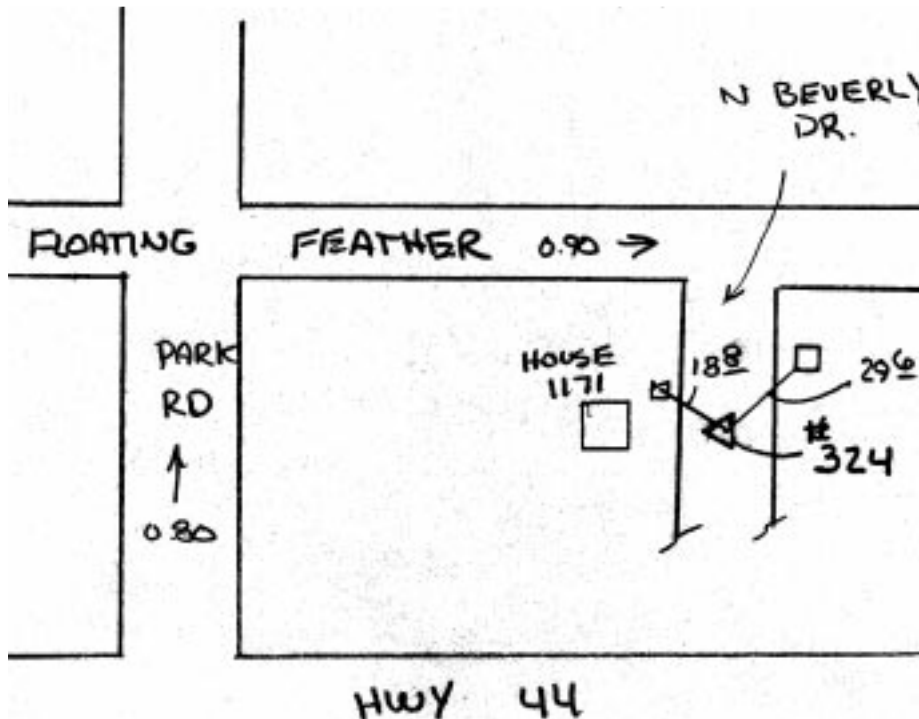
- 323 ±2 miles southeast of Eagle. From the intersection of Cloverdale Road and Highway 20, go west on Highway 20 for 0.50 mile to North Discovery Way. Go south on North Discovery Way to West Lasalle Street. Go east on West Lasalle Street for approximately 200 feet to the station in the centerline of the road. The station is a rebar and 1 1/2 inch Towill aluminum cap stamped, Towill, Inc. Concord CA, 323, set flush. It is ±36 feet southwest, of the southwest corner, of green transformer box number LS13. 27.6 feet northwest of an iron pipe with cap stamped, PLS No. 4436.



Reference
Mark ID
Number

Description

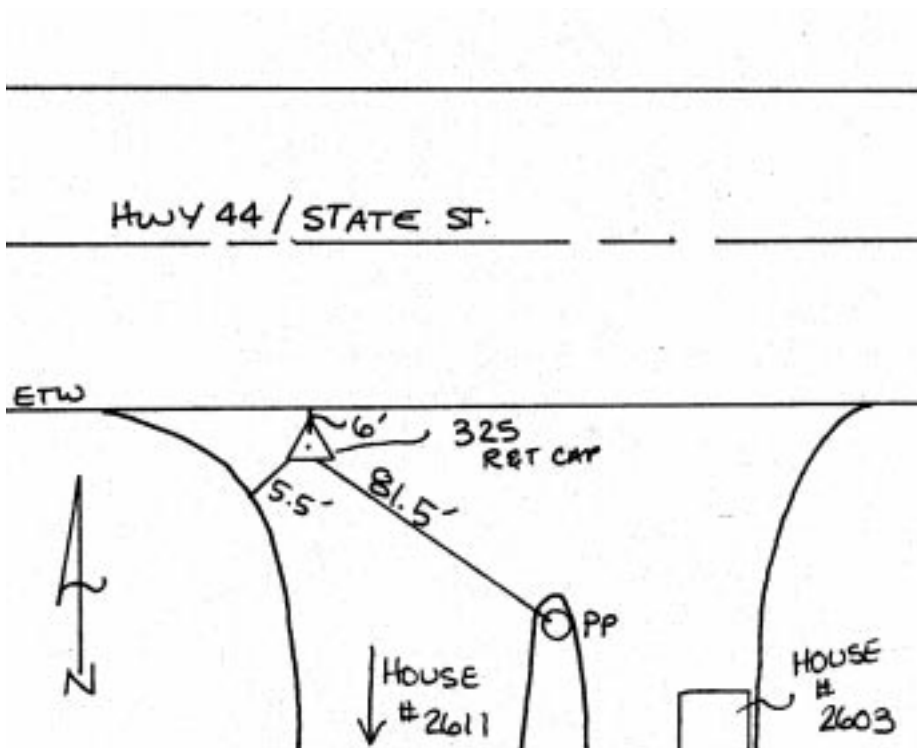
324 ±2 miles west of Eagle. From Highway 44 and Park Street in Eagle, go north on Park Street for 0.80 mile to Floating Feather. Go east on Floating Feather for 0.90 mile to North Beverly Road. Go south on Beverly Road for ±300 feet to the station in the center of the road. The station is a rebar and 1 1/2 Towill aluminum cap stamped, Towill, Inc. Concord CA, 324, set flush. It is located in the center of the road across from house No. 1171. It is 18.8 feet southeast of a mailbox and 29.6 feet southwest of the southwest corner of a concrete vault.



Reference
Mark ID
Number

Description

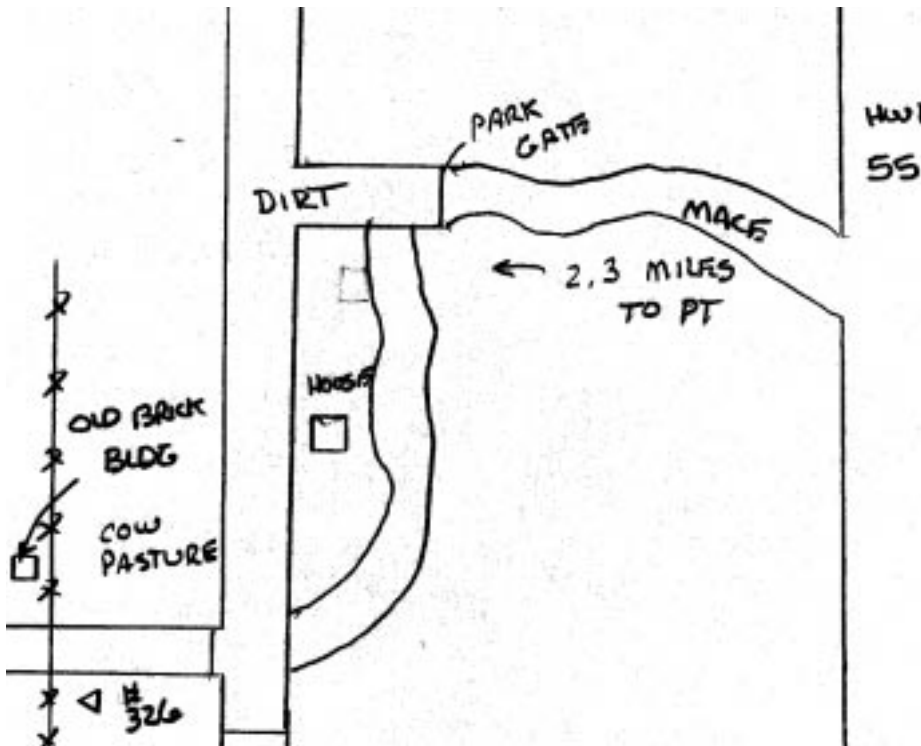
325 ±2 miles west of Eagle. From the intersection of Linder Road and State Street (Highway 44), go east on State Street (Highway 44) for 0.85 mile to the station on the right. The station is a rebar with 1 1/2 inch Towill aluminum cap stamped, Towill, Inc. Concord CA, 325, set flush. Located on the south side of State Street (Highway 44) at the driveway to house No. 2611 and No. 2603. It is 6 feet south of the south edge of traveled way stripe. 81.5 feet northwest of a power pole in the median between the driveways. 400 feet north of house No. 2611.



Reference
Mark ID
Number

Description

- 326 ±3 miles west-southwest of Eagle. From Highway 55 and Mace Road, go west on Mace Road for 2.30 mile, through a park gate to a T-intersection. Go south at T-intersection to the first farm road on the right. Go west for ±1100 feet to the station on the left. The station is a rebar with 2 1/2 inch Towill aluminum cap stamped, Towill, Inc. Concord CA, 326, set flush. Located 46.0 feet south of the road and 30.0 feet east of a fence line.

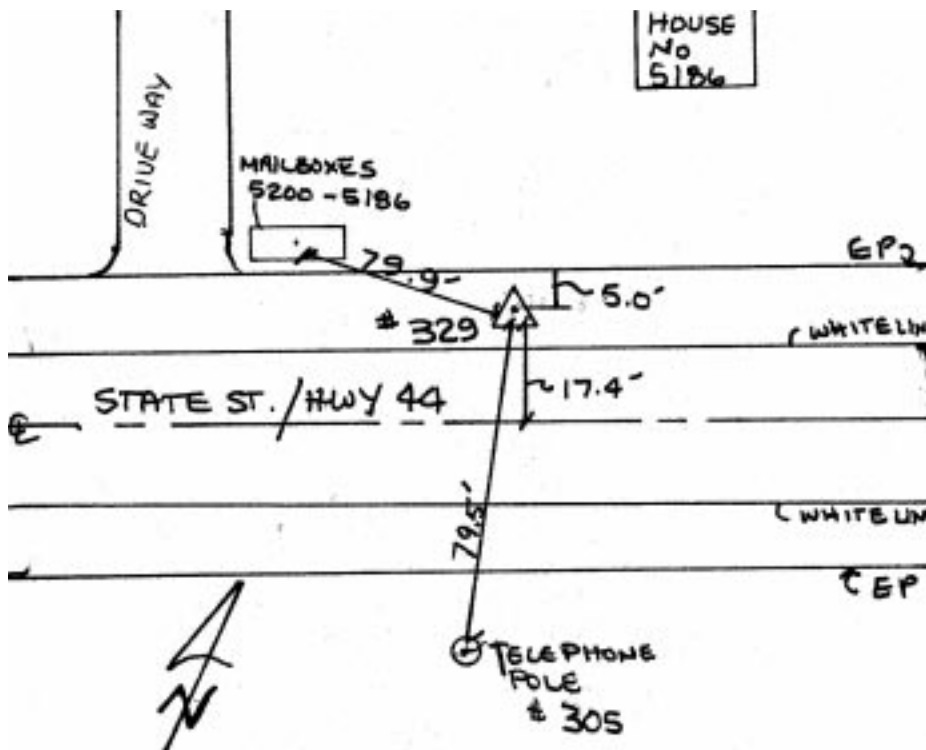


- 327 ±3 miles southwest of Eagle. From the intersection of Highway 20 and Linder Road, go east for 1.0 mile on Highway 20 to North Meridian Road. Go north along North Meridian Road for 0.65 mile to the station on the right (east). The station is a rebar with 1 1/2 inch Towill aluminum cap stamped, Towill, Inc. Concord CA, 327, set flush. The station is located 69.5 feet southeast of a telephone pole. 58.5 feet northeast of telephone box No. 7355. 18.9 feet west of a STOP sign and 5.8 feet southwest of the edge of the pavement.

Reference
Mark ID
Number

Description

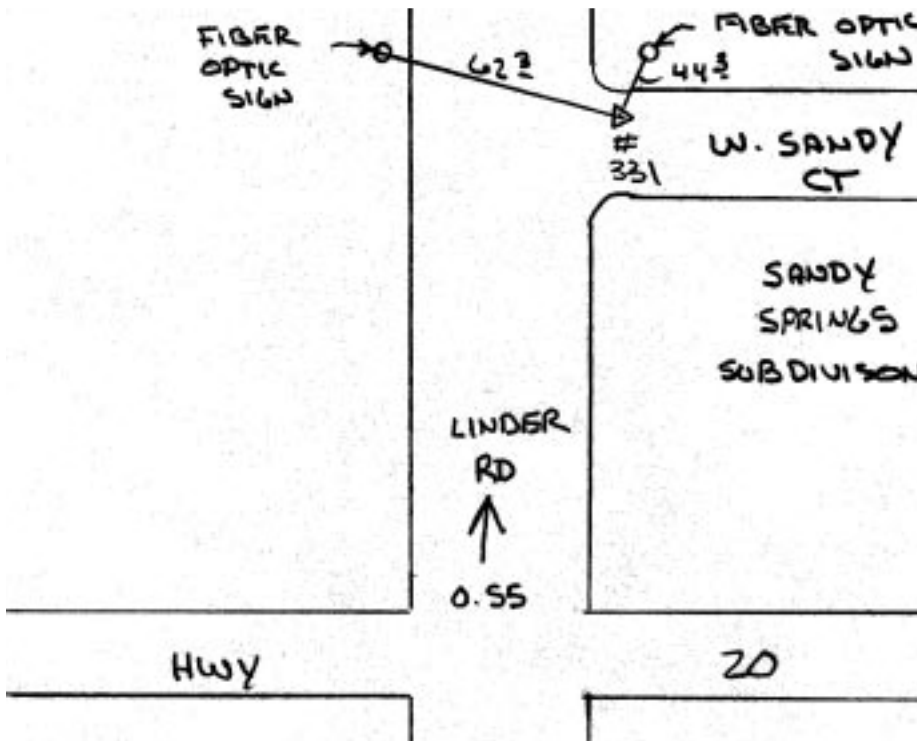
- 328 In Eagle. From the intersection of North Linder Road, go west for 0.25 mile on West Floating Feather Road to the end of a barbed wire fence and the station on the left. The station is located in a paved entrance to an empty field. The station is a rebar with a 1 1/2 inch Towill aluminum cap stamped, Towill, Inc. Concord CA, 328, set flush. It is 5.1 feet south of the edge of the pavement stripe, 20.7 west northwest of 12 inch round corner fence post, 43.5 feet north-west of the 2nd steel post south of the corner post, in a north-south fence line.
- 329 ±3 miles west of Eagle. From the intersection of State Street (Highway 44) and Linder Road, go southwest along State Street (Highway 44) for 0.25 mile to the station on the right (northeast). The station is a rebar with 1 1/2 inch Towill aluminum cap stamped, Towill, Inc. Concord CA, 329, set flush. Located on the northerly side of State Street. It is 79.9 feet east of mailboxes to house No. 5200-5186. 79.5 feet northeast of telephone pole No. 305. 17.4 feet northwest of the centerline of State Street (Highway 44), and 5.0 feet southeast of northerly edge of the pavement.



Reference
Mark ID
Number

Description

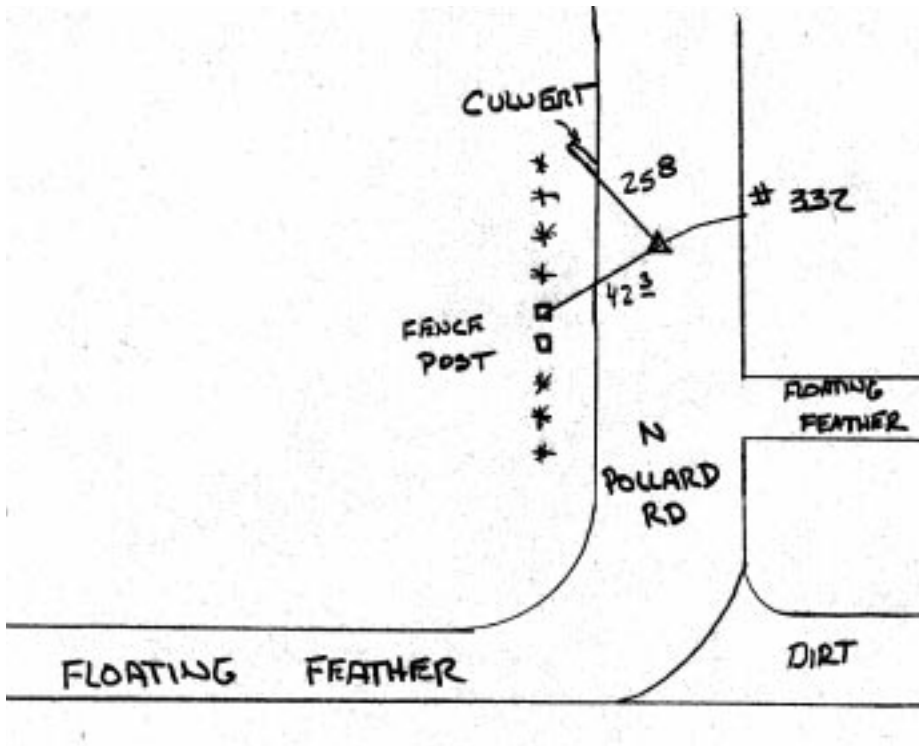
- 330 4 miles west-southwest of Eagle. From State Road 44, go south on South Linder Road for 0.70 mile to Three Rivers Ranch entrance. Turn right and go 0.20 mile to farm buildings. Turn left and go south, passing on the east side of the buildings, for 0.13 mile to a dirt road right. Turn right and go west along a fence for 0.12 mile to a gate and the station on the south side of the fence, west side of the gate. The station is a rebar with a 2 1/2 inch Towill aluminum cap stamped, Towill, Inc. Concord CA, 330, set flush. The station is located 8.3 feet west of the west gate post. It is 4.0 feet south of the center post, of three wood posts. 8.7 feet southeast of the westerly post and 50 feet north of the creek.
- 331 ±4 miles north of Meridian. From the intersection of Highway 20 and Linder Road, go north on Linder Road for 0.55 mile to West Sandy Court, also the entrance to Sandy Springs subdivision and the station located in the northeast side of the entrance. The station is a rebar with Towill 1 1/2 inch aluminum cap stamped, Towill, Inc. Concord CA, No. 331, set flush. It is 44.3 feet southwest of a fiber optic sign and 62.3 southeast of another fiber optic sign.



Reference
Mark ID
Number

Description

- 332 ±2 miles northeast of Star. From the intersection of Floating Feather and North Pollard, go north on Pollard for 0.45 mile to the station in the centerline of the road. The station is a rebar with 1 1/2 inch Towill aluminum cap stamped, Towill, Inc. Concord CA, 332, set flush. It is 42.3 feet northeast of a wood fence post and 25.8 feet southeast of a culvert.

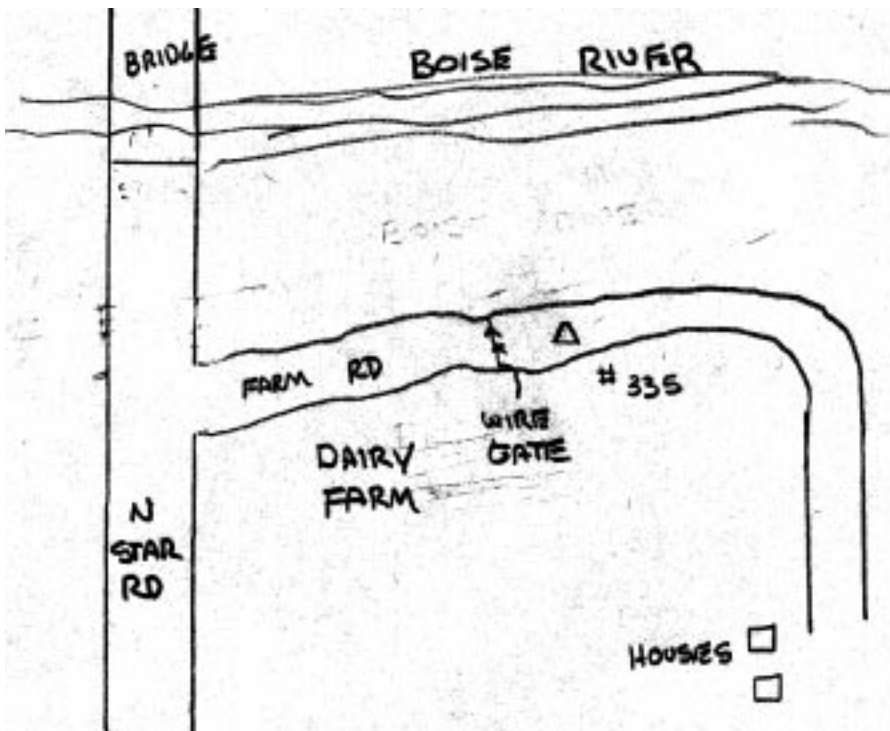


- 334 From Star Road in the town of Star, go east on Highway 44 for 0.95 mile to North Plummer Road. Turn left and go 0.16 mile to the station in the centerline of the road. The station is a rebar with a 1 1/2 inch Towill aluminum cap stamped, Towill, Inc. Concord CA, 334, set flush. It is located 91.3 feet north of a corner fence post for house No. 280, Plummer Road. It is 149.2 feet north of an aluminum disk in the centerline of Plummer Road at a box culvert under road. The disk is stamped, Initial Pt, Steven's Subd. 32.3 feet southwest of end of the fence, fence post. 10.6 feet east of west edge of the pavement.

Reference
Mark ID
Number

Description

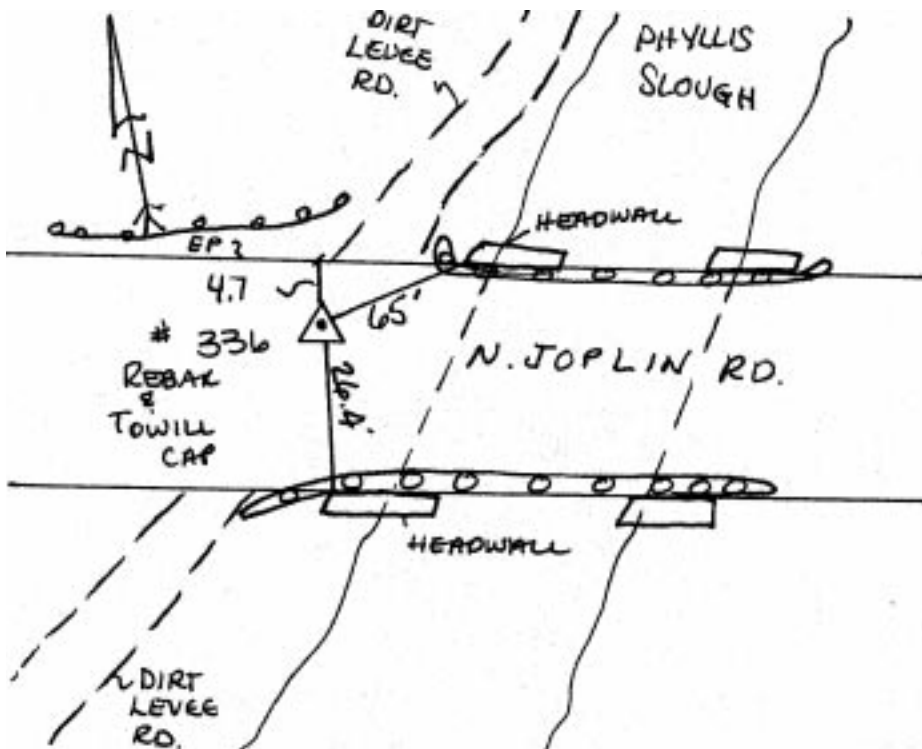
- 335 ±1 miles southeast of Star. From Highway 44 in Star go south on Star Road to the south side of the Boise River Bridge. Take farm road to the east for approximately 0.6 mile to the station is the center of the road. The station is a rebar with 2 1/2 inch Towill aluminum cap stamped, Towill, Inc. Concord CA, 335, set flush. The station is near a painted fence post.



Reference
Mark ID
Number

Description

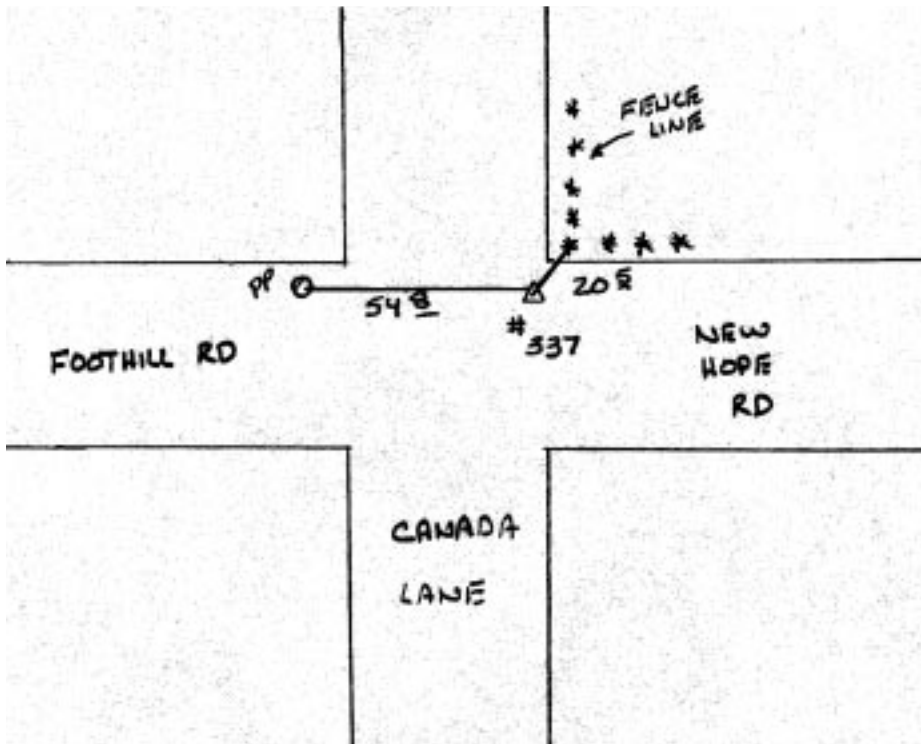
336 ±2 miles southeast of Star. From the intersection of Star Road and Joplin Road, go east along North Joplin Road for 1.1 mile to the station on the left (north). The station is a rebar with 1 1/2 inch Towill aluminum cap stamped, Towill, Inc. Concord CA, 336, set flush. The station is located on the north side of North Joplin Road. It is 65 feet southwest of the northwest headwall at Phyllis Slough and 26.4 feet north of southwest headwall at Phyllis Slough. 4.7 feet south of the edge of the pavement.



Reference
Mark ID
Number

Description

337 ±3 miles northwest of Star. Located in the northeast corner of the intersection of New Hope Road, Canada Lane and Foothill Road. The station is a rebar and Towill 2 1/2 inch aluminum cap stamped, Towill, Inc. Concord CA, 337, set flush. It is 20.5 feet southwest of a fence corner and 54.8 feet east of a power pole.



- 338 From Star Road in the town of Star, go west on Highway 44 (State Street) for 0.9 mile to CanAda Road. Turn right and go north on CanAda Road for 0.8 mile to the station on the right, in a paved turnout to a field. The station is a rebar with a 1 1/2 inch Towill aluminum cap stamped, Towill, Inc. Concord CA, 338, set flush. The station is located 65.4 feet south of a telephone pole on the east side of the road. It is 284.7 feet south of striped yellow and black highway paddle on the east side of the road, south side of the bridge. 600 feet south of the intersection of Quenzer Lane. 16.1 feet east of centerline of the road, 18.2 feet south of a gate post.
- 339 ±1 mile west of Star. From the intersection of West State Street (Highway 44) and North CanAda Road, go north for 104.6 feet along North CanAda Road to the station on the right. The station is a rebar with 1 1/2 inch Towill aluminum cap stamped, Towill, Inc. Concord CA, 339, set flush. The station is located in the easterly white stripe of North CanAda Road. It is 52.1 feet northwest of telephone pole No. 405. 45.0 feet northeast of a stop sign. 10.3 feet east of the centerline stripe of North CanAda Road.
- 340 From Star Road in the town of Star, go west on Highway 44 for 1.25 mile to Benton Lane. Turn left and go 0.3 mile to Castagnola, a private lane. Turn left and follow road for 0.45 mile to a gate. Pass through the gate and go 0.17 mile to a T-intersection with a levee road and the station on the right. The station is a rebar with a 2 1/2 inch Towill aluminum cap stamped, Towill, Inc. Concord CA, 340, set flush. The station is located in the centerline of the levee road. It is 4.7 feet east of the gate, 10.45 feet north of the south gate post and 9.25 feet south of the north steel gate post. 44 feet west of the centerline intersection of Canada Road and the levee road on the north bank of the Boise River. 24.0 feet south of an 8 inch by 8 inch wood fence post at T-intersection in north-south, east-west fence line.