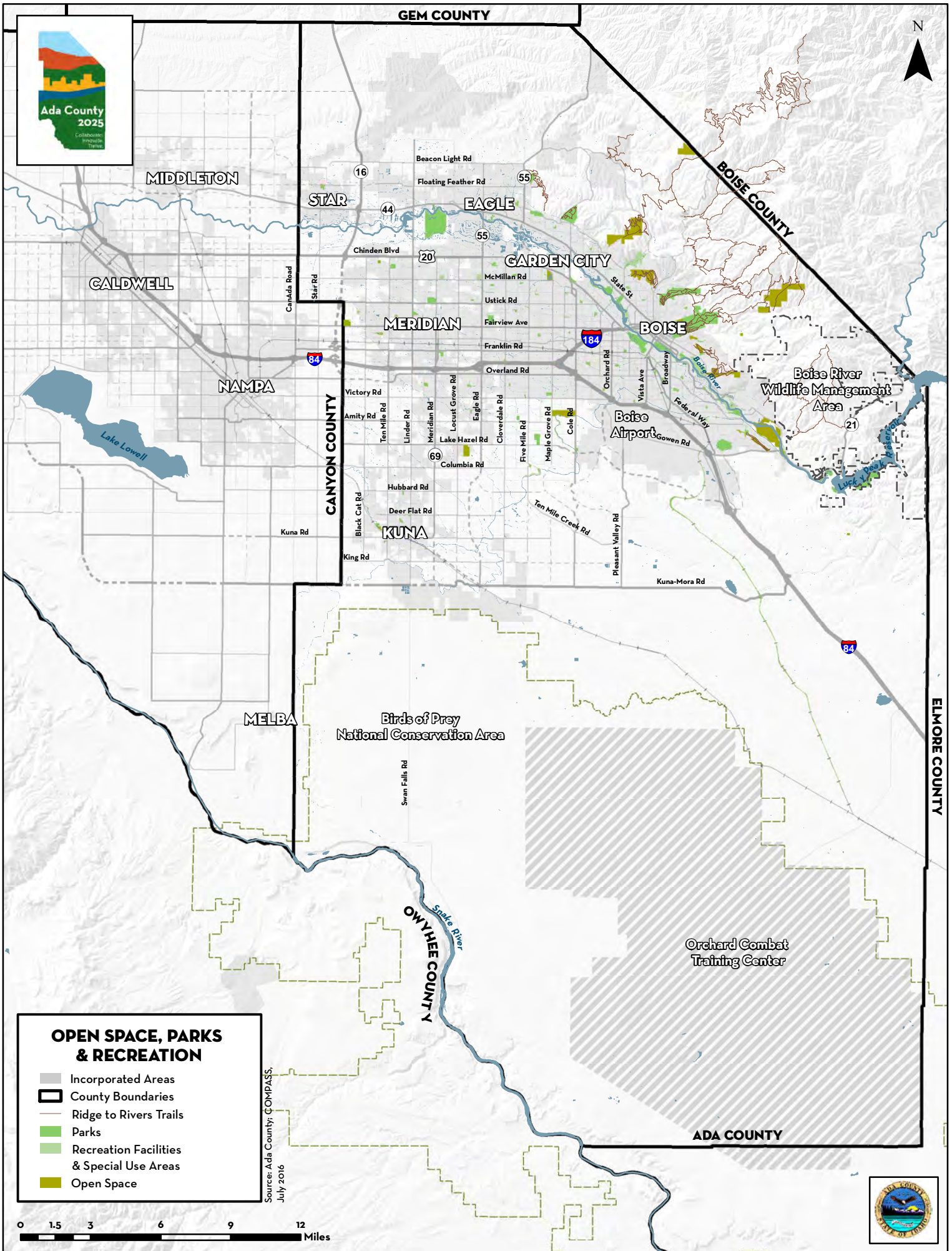


# Appendix C: Map Atlas

**This page intentionally blank.**



**OPEN SPACE, PARKS  
& RECREATION**

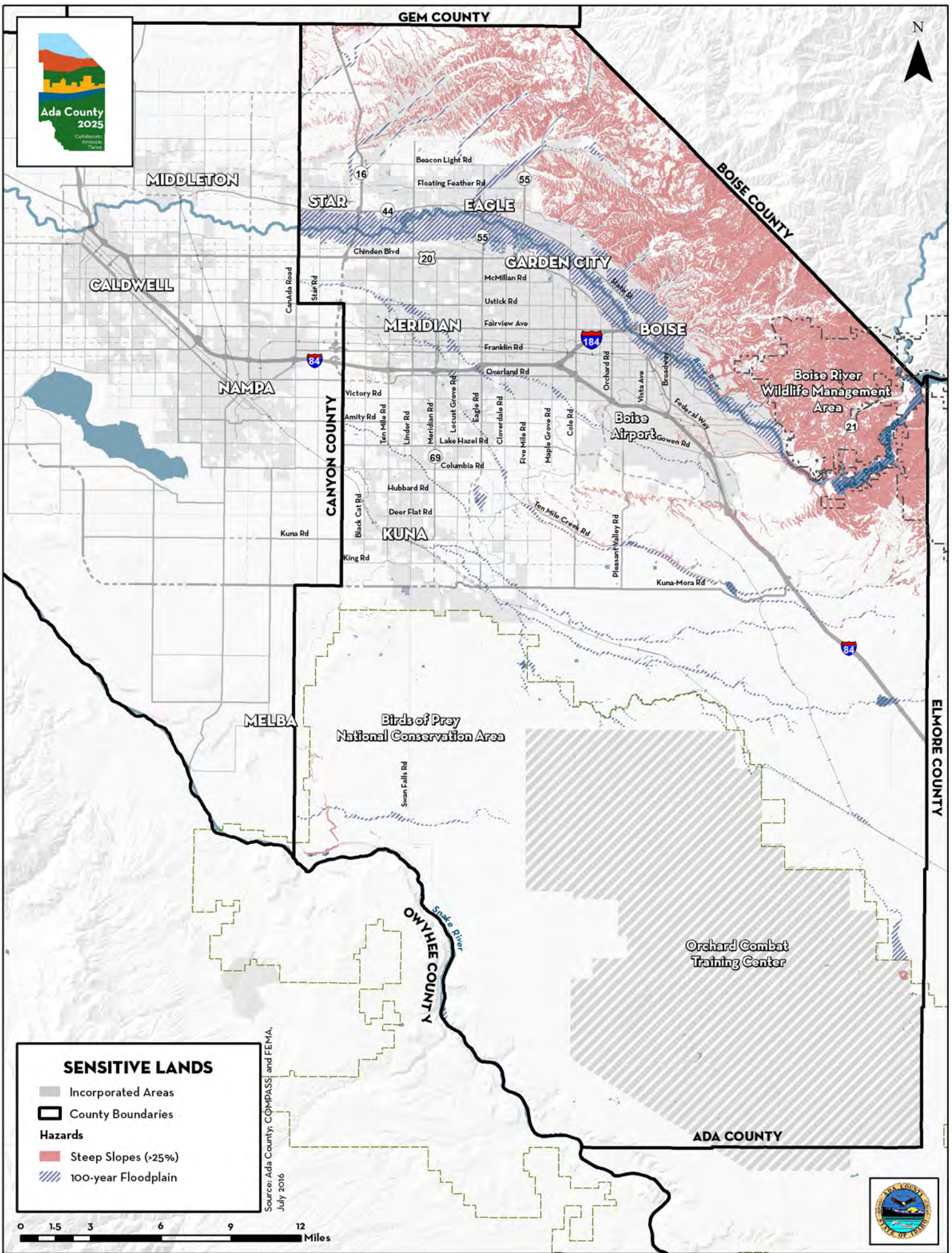
- Incorporated Areas
- County Boundaries
- Ridge to Rivers Trails
- Parks
- Recreation Facilities & Special Use Areas
- Open Space

Source: Ada County, COMPASS,  
July 2016

0 1.5 3 6 9 12 Miles



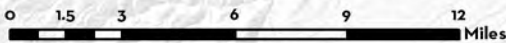




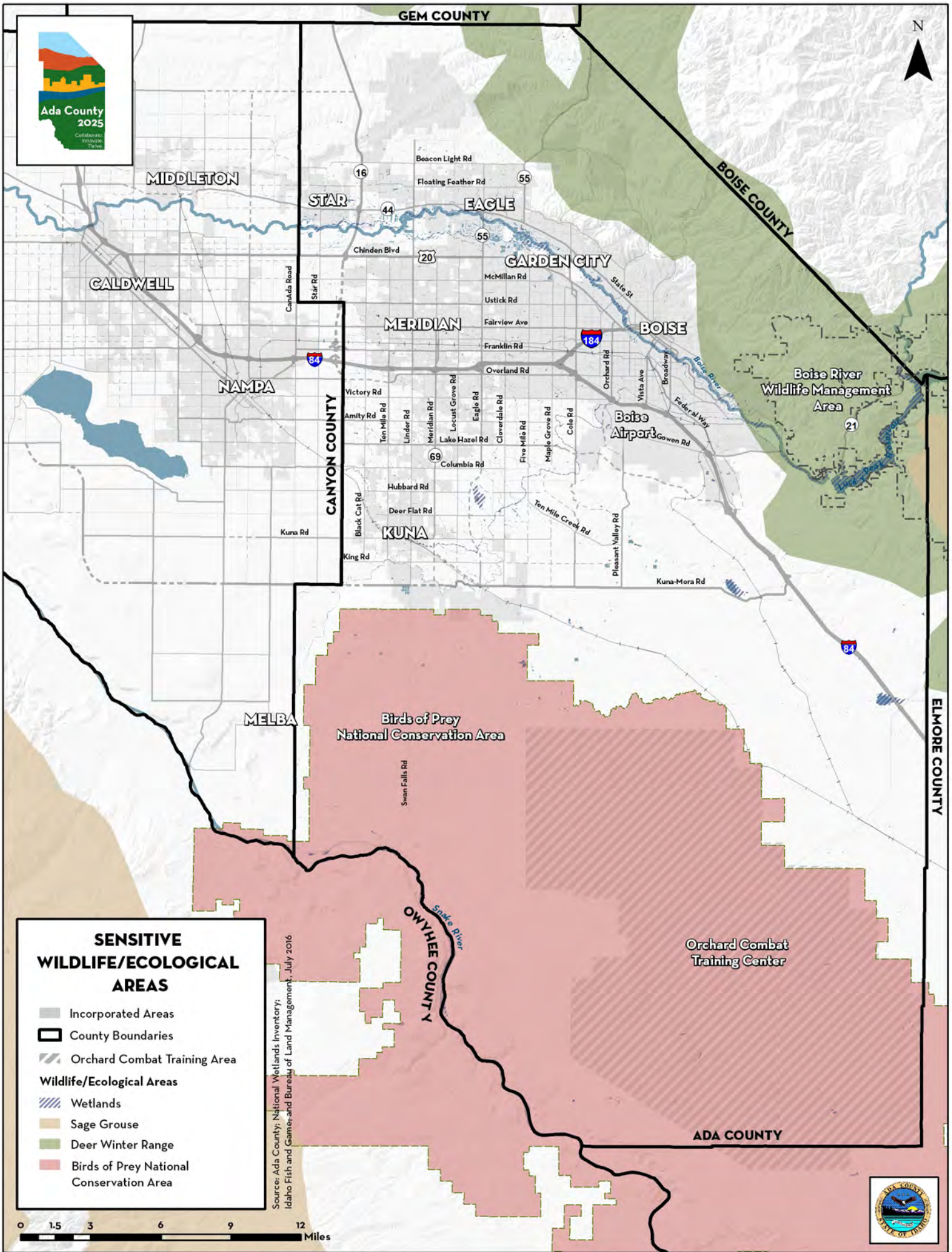
**SENSITIVE LANDS**

- Incorporated Areas
- County Boundaries
- Hazards**
- Steep Slopes (>25%)
- 100-year Floodplain

Source: Ada County; COMPASS; and FEMA, July 2016



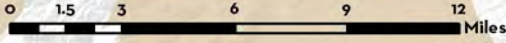




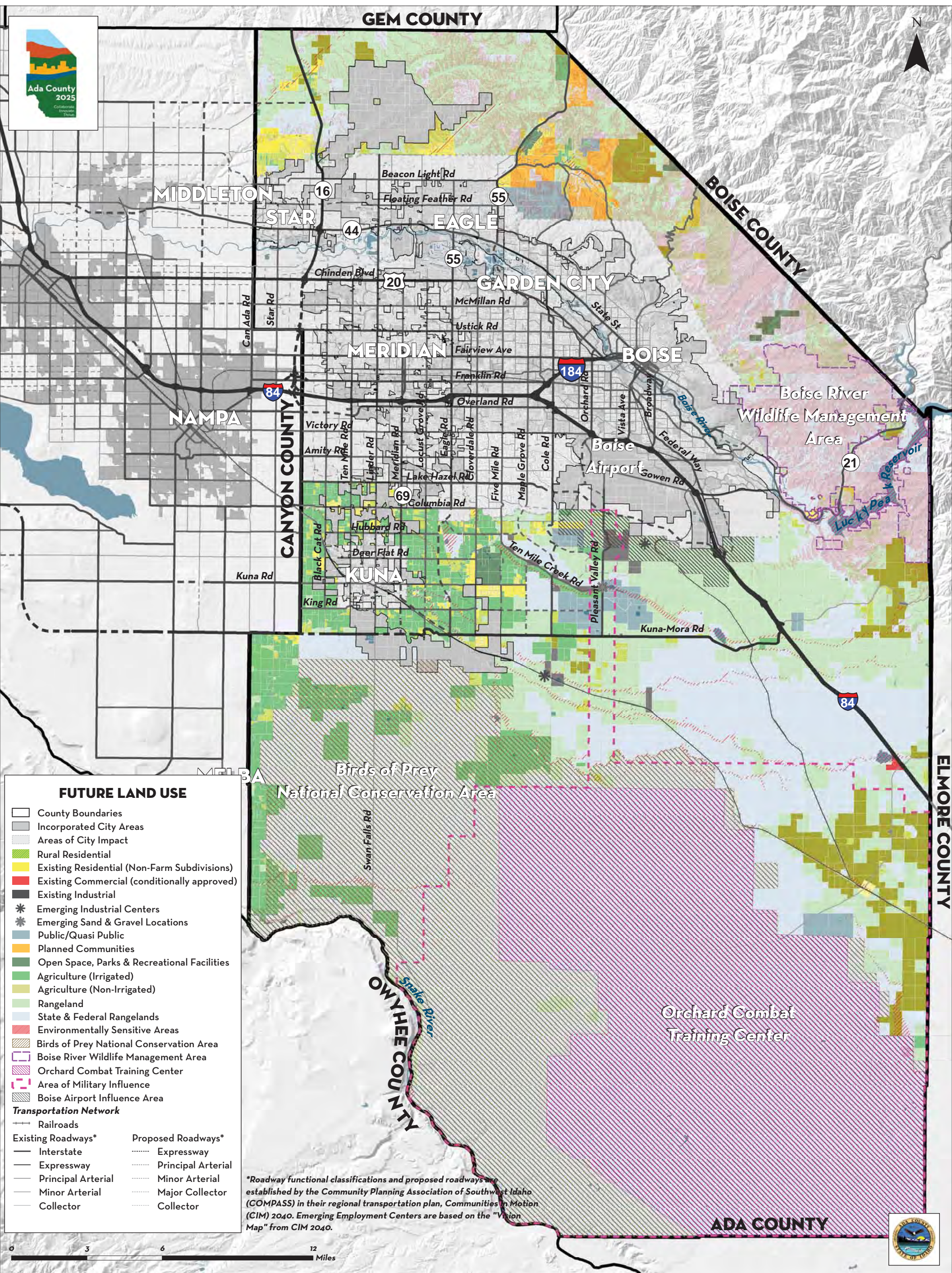
**SENSITIVE WILDLIFE/ECOLOGICAL AREAS**

- Incorporated Areas
- County Boundaries
- Orchard Combat Training Area
- Wildlife/Ecological Areas**
- Wetlands
- Sage Grouse
- Deer Winter Range
- Birds of Prey National Conservation Area

Source: Ada County; National Wetlands Inventory; Idaho Fish and Game; and Bureau of Land Management, July 2016







**FUTURE LAND USE**

- County Boundaries
- Incorporated City Areas
- Areas of City Impact
- Rural Residential
- Existing Residential (Non-Farm Subdivisions)
- Existing Commercial (conditionally approved)
- Existing Industrial
- Emerging Industrial Centers
- Emerging Sand & Gravel Locations
- Public/Quasi Public
- Planned Communities
- Open Space, Parks & Recreational Facilities
- Agriculture (Irrigated)
- Agriculture (Non-Irrigated)
- Rangeland
- State & Federal Rangelands
- Environmentally Sensitive Areas
- Birds of Prey National Conservation Area
- Boise River Wildlife Management Area
- Orchard Combat Training Center
- Area of Military Influence
- Boise Airport Influence Area

**Transportation Network**

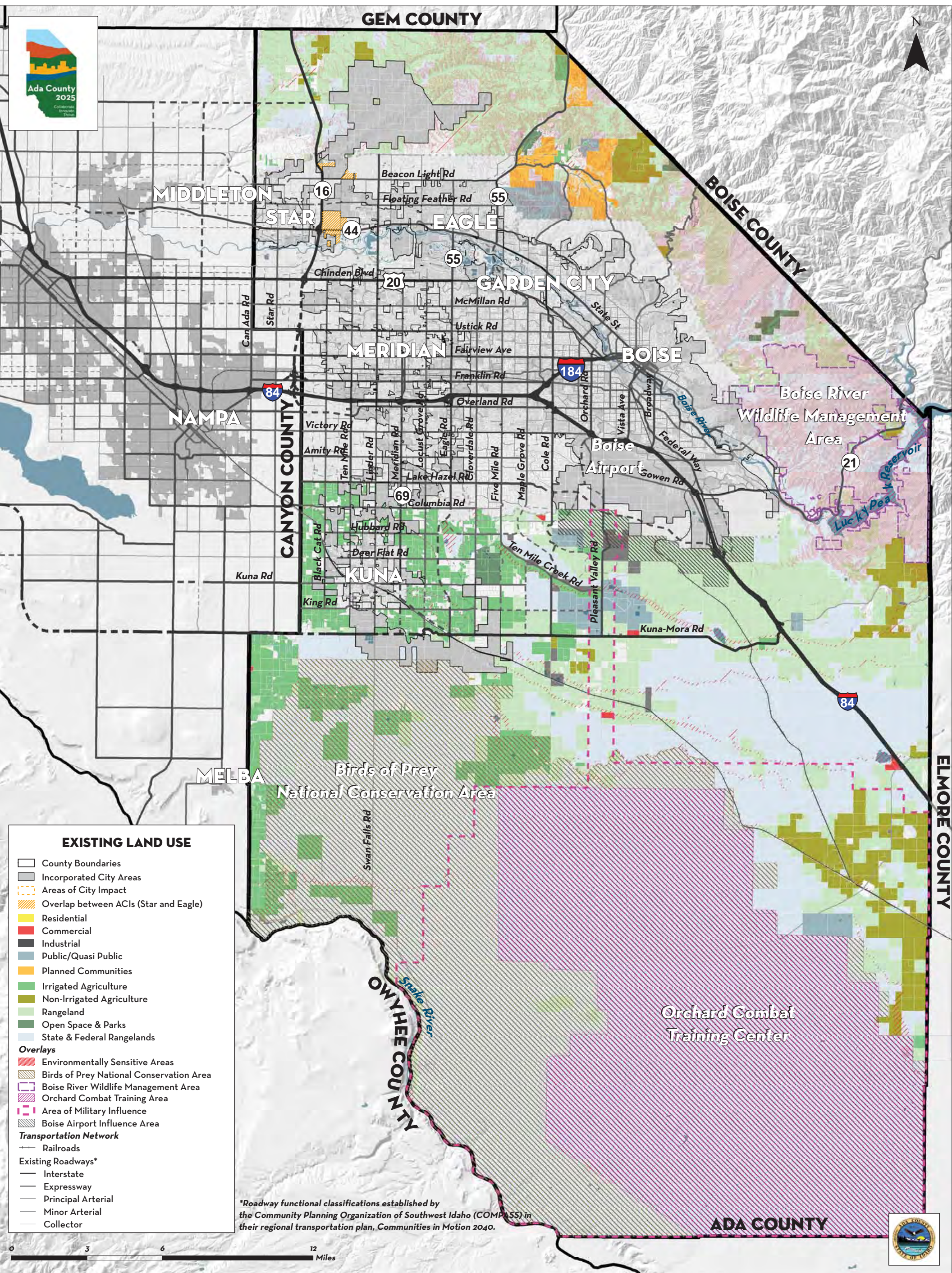
- Railroads

<b>Existing Roadways*</b>	<b>Proposed Roadways*</b>
Interstate	Expressway
Expressway	Principal Arterial
Principal Arterial	Minor Arterial
Minor Arterial	Major Collector
Collector	Collector

*\*Roadway functional classifications and proposed roadways are established by the Community Planning Association of Southwest Idaho (COMPASS) in their regional transportation plan, Communities in Motion (CIM) 2040. Emerging Employment Centers are based on the "Vision Map" from CIM 2040.*





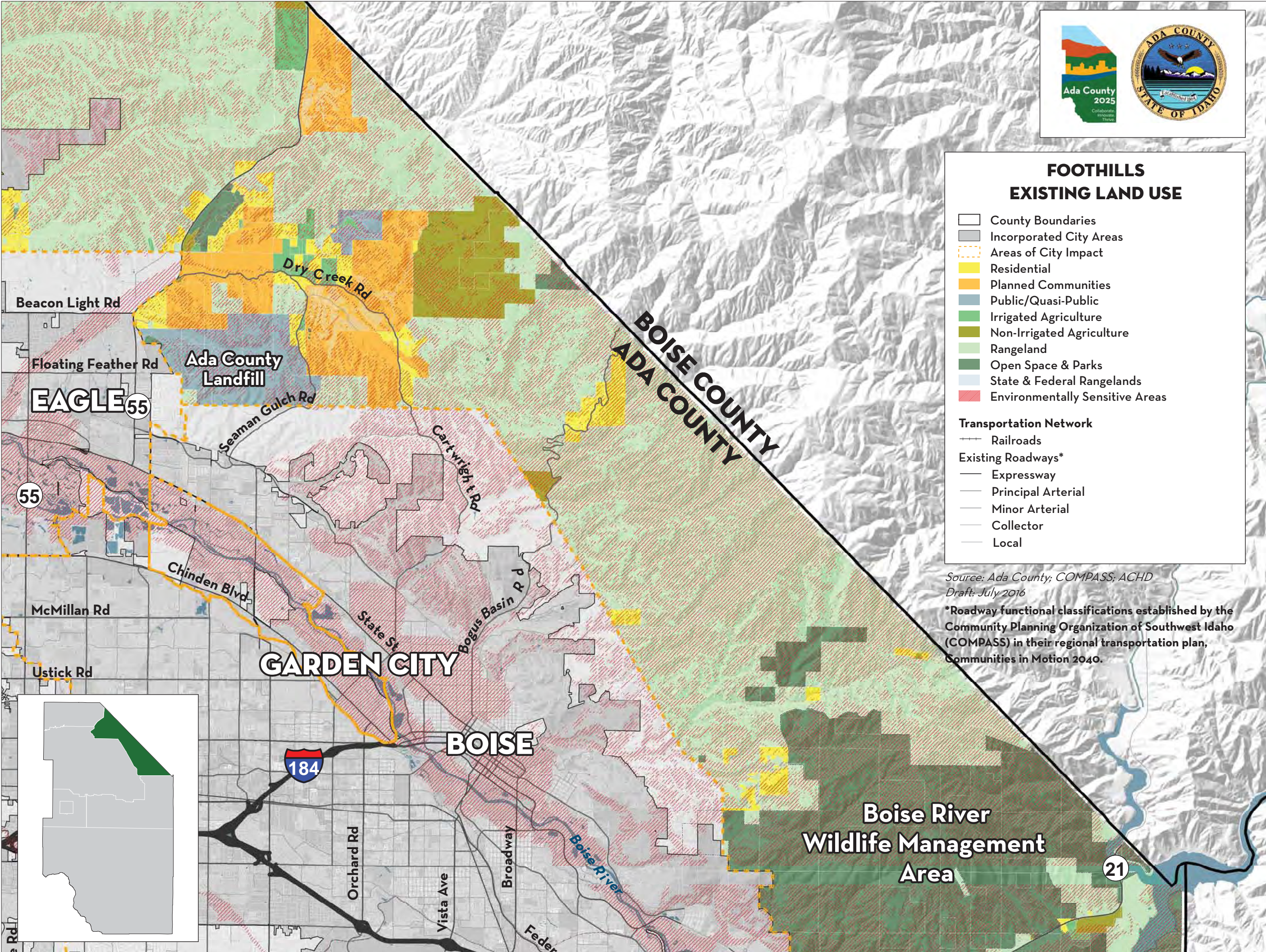


- EXISTING LAND USE**
- County Boundaries
  - Incorporated City Areas
  - Areas of City Impact
  - Overlap between ACIs (Star and Eagle)
  - Residential
  - Commercial
  - Industrial
  - Public/Quasi Public
  - Planned Communities
  - Irrigated Agriculture
  - Non-Irrigated Agriculture
  - Rangeland
  - Open Space & Parks
  - State & Federal Rangelands
- Overlays**
- Environmentally Sensitive Areas
  - Birds of Prey National Conservation Area
  - Boise River Wildlife Management Area
  - Orchard Combat Training Area
  - Area of Military Influence
  - Boise Airport Influence Area
- Transportation Network**
- Railroads
- Existing Roadways\***
- Interstate
  - Expressway
  - Principal Arterial
  - Minor Arterial
  - Collector

\*Roadway functional classifications established by the Community Planning Organization of Southwest Idaho (COMPASS) in their regional transportation plan, Communities in Motion 2040.







**FOOTHILLS  
EXISTING LAND USE**

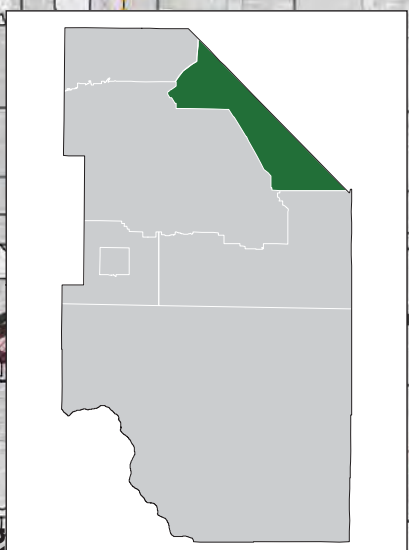
- County Boundaries
- Incorporated City Areas
- Areas of City Impact
- Residential
- Planned Communities
- Public/Quasi-Public
- Irrigated Agriculture
- Non-Irrigated Agriculture
- Rangeland
- Open Space & Parks
- State & Federal Rangelands
- Environmentally Sensitive Areas

**Transportation Network**

- Railroads
- Existing Roadways\***
- Expressway
- Principal Arterial
- Minor Arterial
- Collector
- Local

Source: Ada County; COMPASS; ACHD  
Draft: July 2016

\*Roadway functional classifications established by the Community Planning Organization of Southwest Idaho (COMPASS) in their regional transportation plan, Communities in Motion 2040.



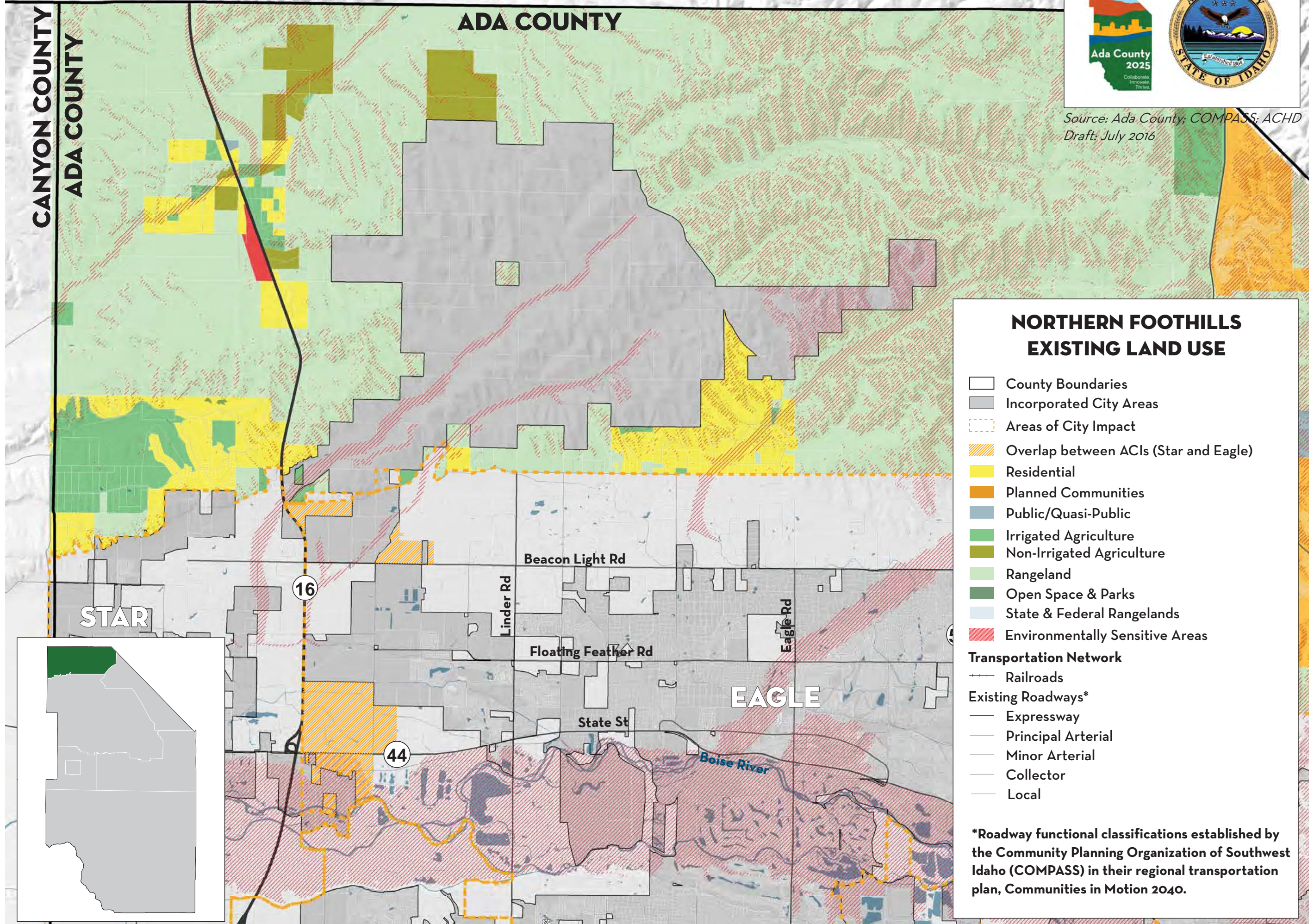


# GEM COUNTY ADA COUNTY



Source: Ada County; COMPASS; ACHD  
Draft: July 2016

CANYON COUNTY  
ADA COUNTY



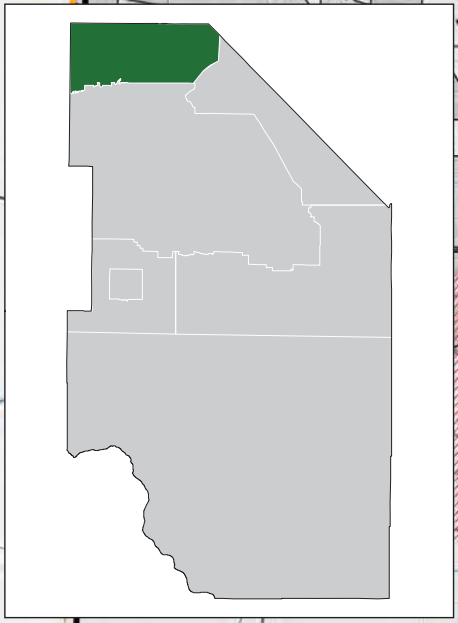
## NORTHERN FOOTHILLS EXISTING LAND USE

- County Boundaries
- Incorporated City Areas
- Areas of City Impact
- Overlap between ACIs (Star and Eagle)
- Residential
- Planned Communities
- Public/Quasi-Public
- Irrigated Agriculture
- Non-Irrigated Agriculture
- Rangeland
- Open Space & Parks
- State & Federal Rangelands
- Environmentally Sensitive Areas

### Transportation Network

- Railroads
- Existing Roadways\***
- Expressway
- Principal Arterial
- Minor Arterial
- Collector
- Local

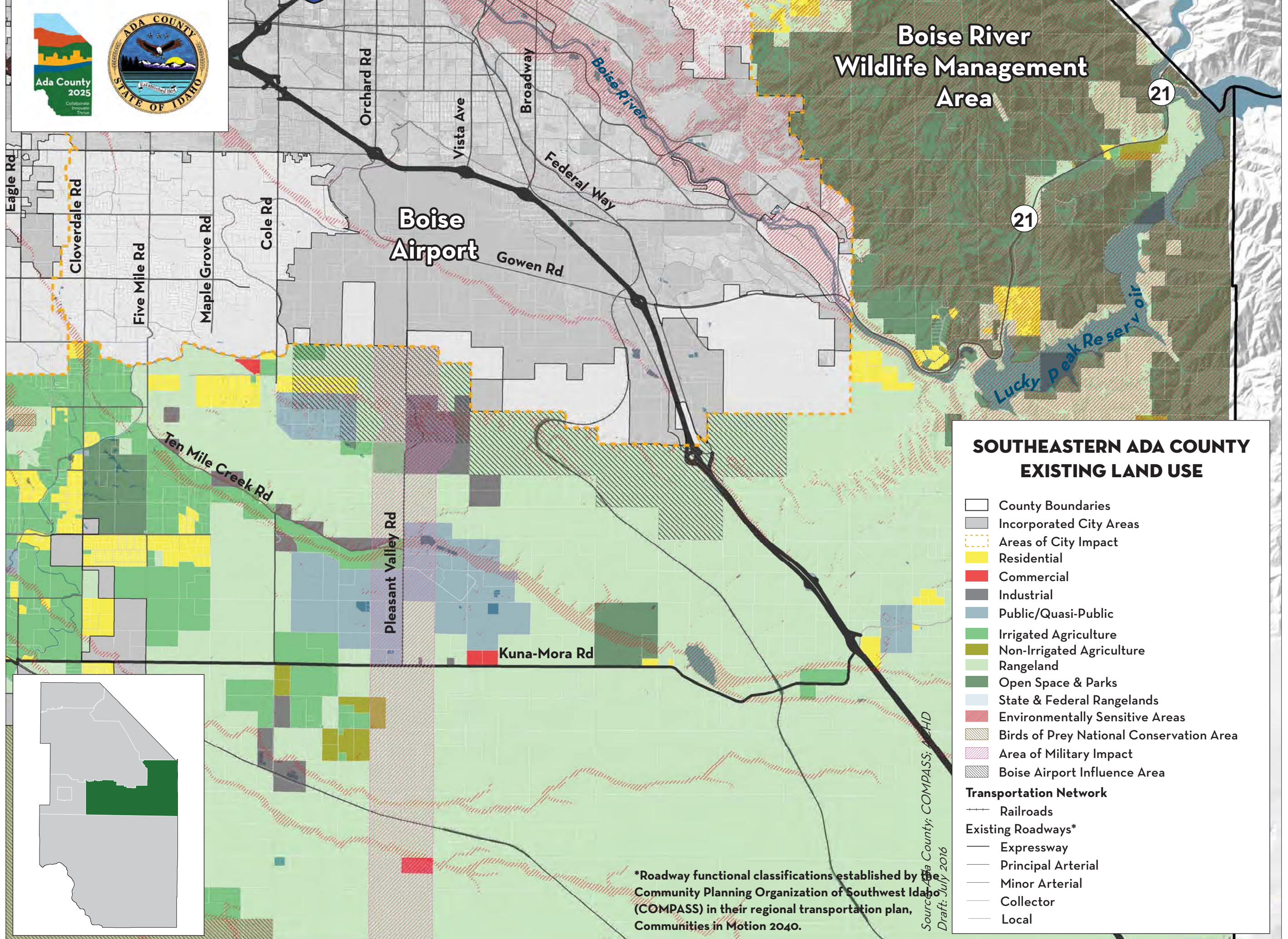
\*Roadway functional classifications established by the Community Planning Organization of Southwest Idaho (COMPASS) in their regional transportation plan, Communities in Motion 2040.





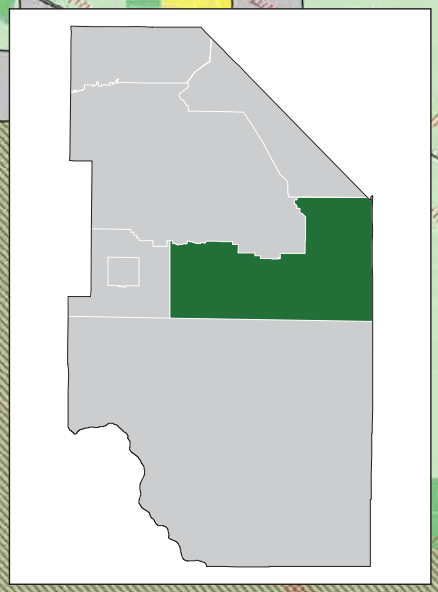


# Boise River Wildlife Management Area



## SOUTHEASTERN ADA COUNTY EXISTING LAND USE

- County Boundaries
  - Incorporated City Areas
  - Areas of City Impact
  - Residential
  - Commercial
  - Industrial
  - Public/Quasi-Public
  - Irrigated Agriculture
  - Non-Irrigated Agriculture
  - Rangeland
  - Open Space & Parks
  - State & Federal Rangelands
  - Environmentally Sensitive Areas
  - Birds of Prey National Conservation Area
  - Area of Military Impact
  - Boise Airport Influence Area
- Transportation Network**
- Railroads
- Existing Roadways\***
- Expressway
  - Principal Arterial
  - Minor Arterial
  - Collector
  - Local



\*Roadway functional classifications established by the Community Planning Organization of Southwest Idaho (COMPASS) in their regional transportation plan, Communities in Motion 2040.

Source: Ada County; COMPASS; NCHD  
Draft: July 2016





### SOUTHWESTERN ADA COUNTY EXISTING LAND USE

- County Boundaries
- Incorporated City Areas
- Areas of City Impact
- Residential
- Irrigated Agriculture
- Non-Irrigated Agriculture
- Rangeland
- Open Space & Parks
- State & Federal Rangelands
- Environmentally Sensitive Areas
- Birds of Prey National Conservation Area

#### Transportation Network

Railroads

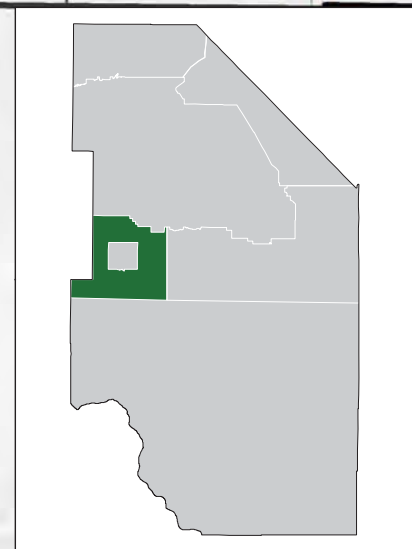
#### Existing Roadways\*

- Expressway
- Principal Arterial
- Minor Arterial
- Collector
- Local

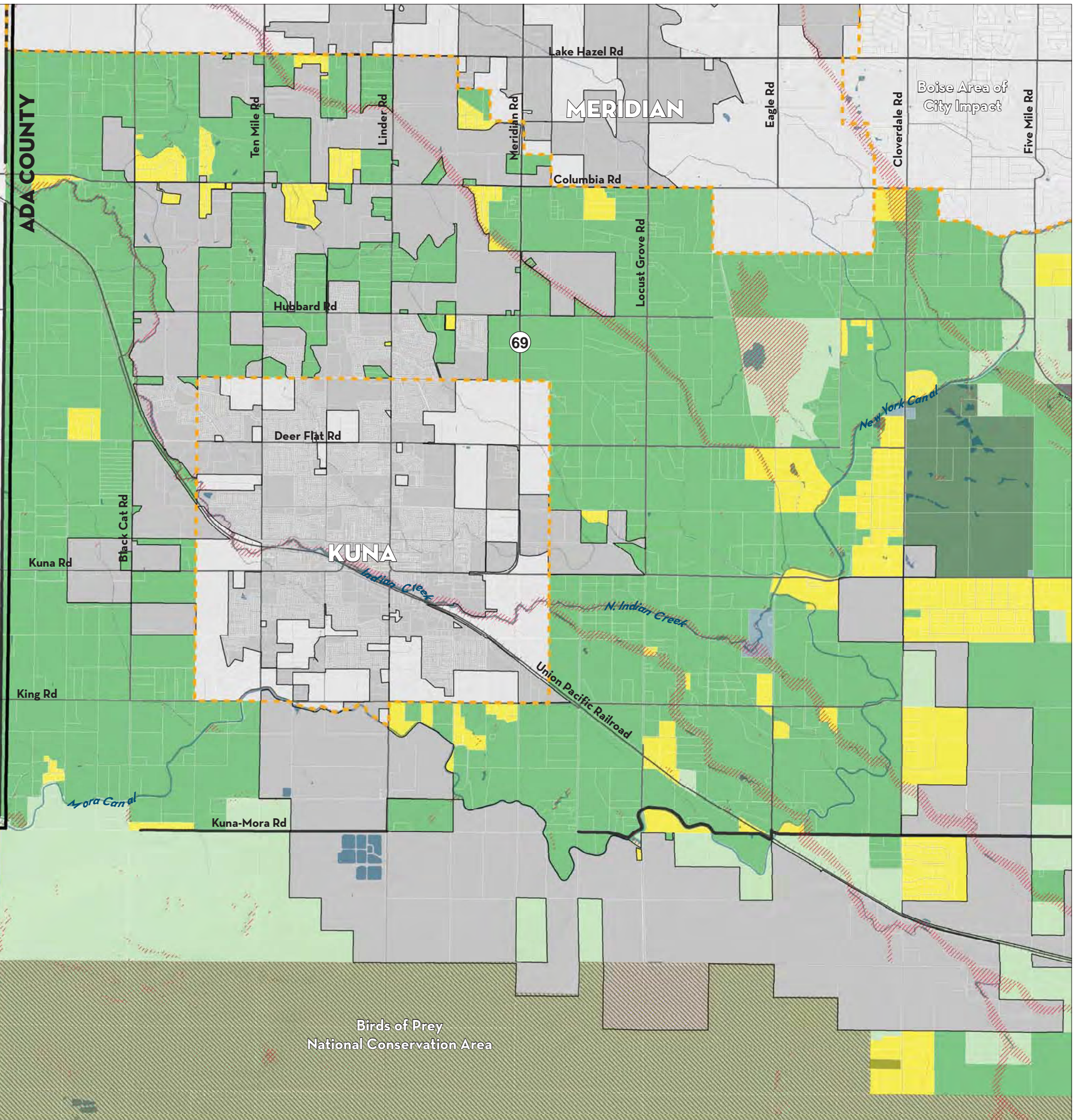
Source: Ada County; COMPASS; ACHD

Draft: July 2016

\*Roadway functional classifications established by the Community Planning Organization of Southwest Idaho (COMPASS) in their regional transportation plan, Communities in Motion 2040.



CANYON COUNTY  
ADA COUNTY



Lake Hazel Rd

Columbia Rd

69

Deer Flat Rd

KUNA

Union Pacific Railroad

Kuna-Mora Rd

Birds of Prey National Conservation Area

Boise Area of City Impact

New York Canal

Mora Canal

Kuna Rd

King Rd

Black Cat Rd

Ten Mile Rd

Linder Rd

Meridian Rd

Eagle Rd

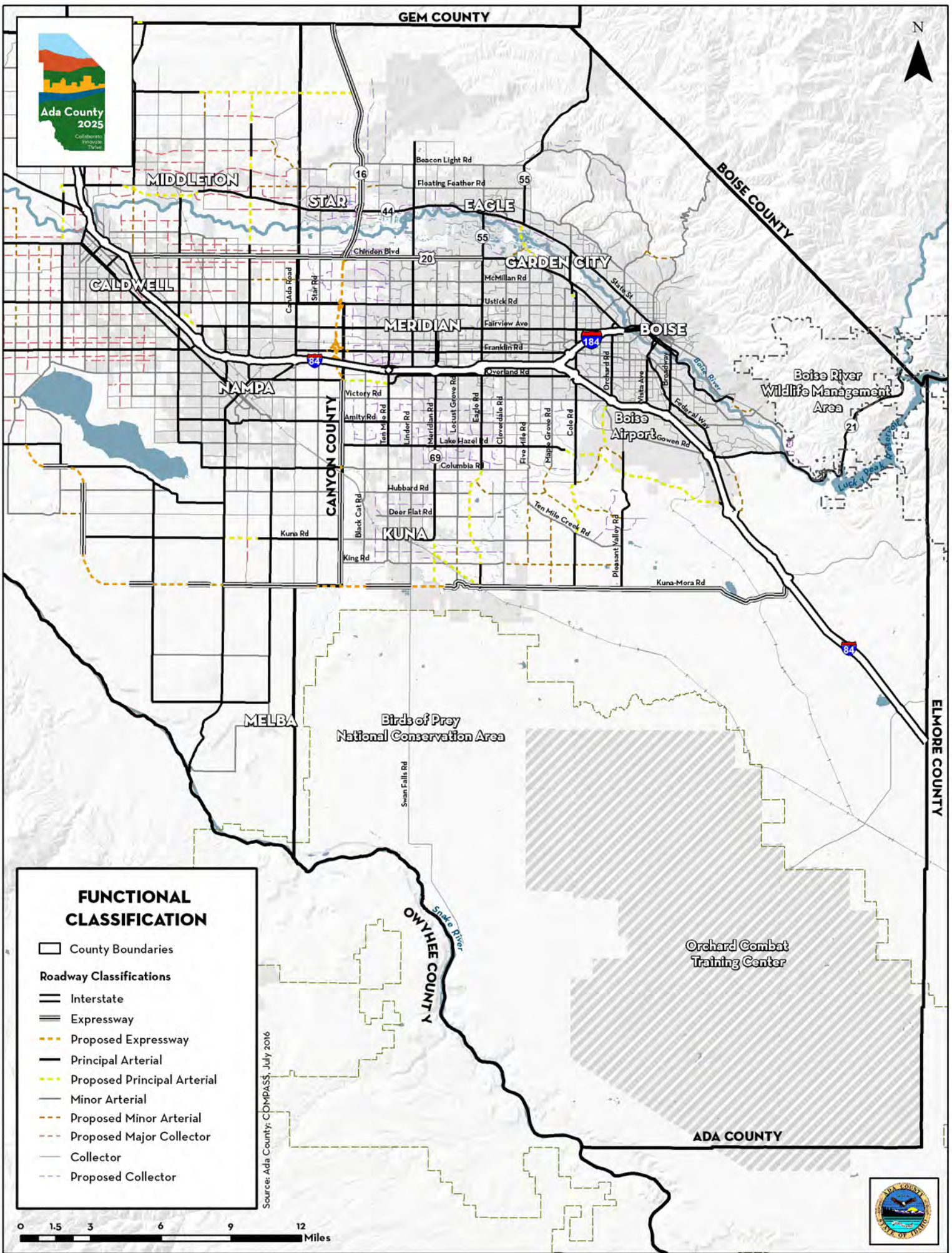
Cloverdale Rd

Five Mile Rd

Locust Grove Rd

Hubbard Rd

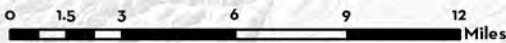




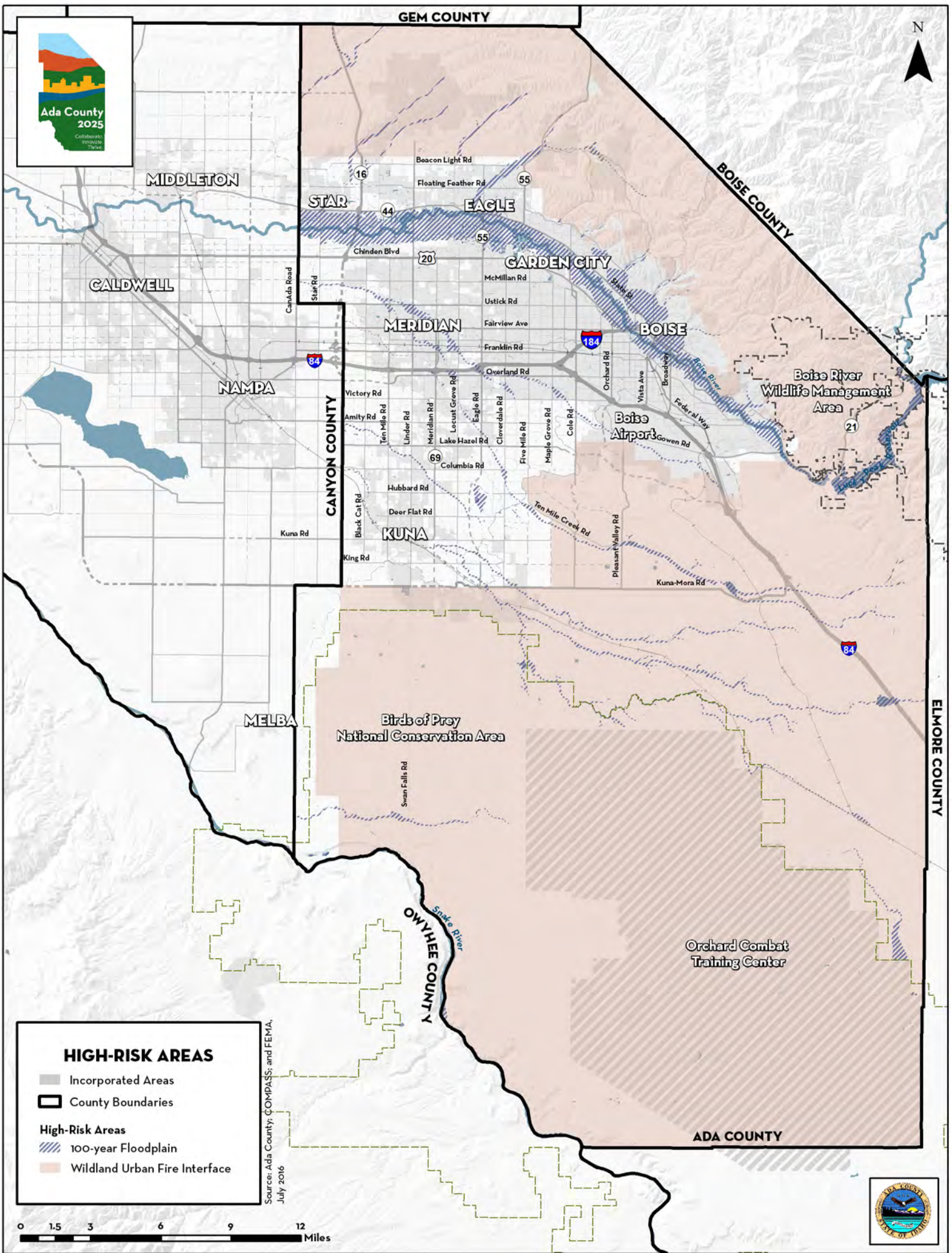
**FUNCTIONAL CLASSIFICATION**

- County Boundaries
- Roadway Classifications**
- Interstate
- Expressway
- Proposed Expressway
- Principal Arterial
- Proposed Principal Arterial
- Minor Arterial
- Proposed Minor Arterial
- Proposed Major Collector
- Collector
- Proposed Collector

Source: Ada County: CDMPASS, July 2016







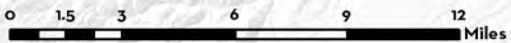
**HIGH-RISK AREAS**

- Incorporated Areas
- County Boundaries

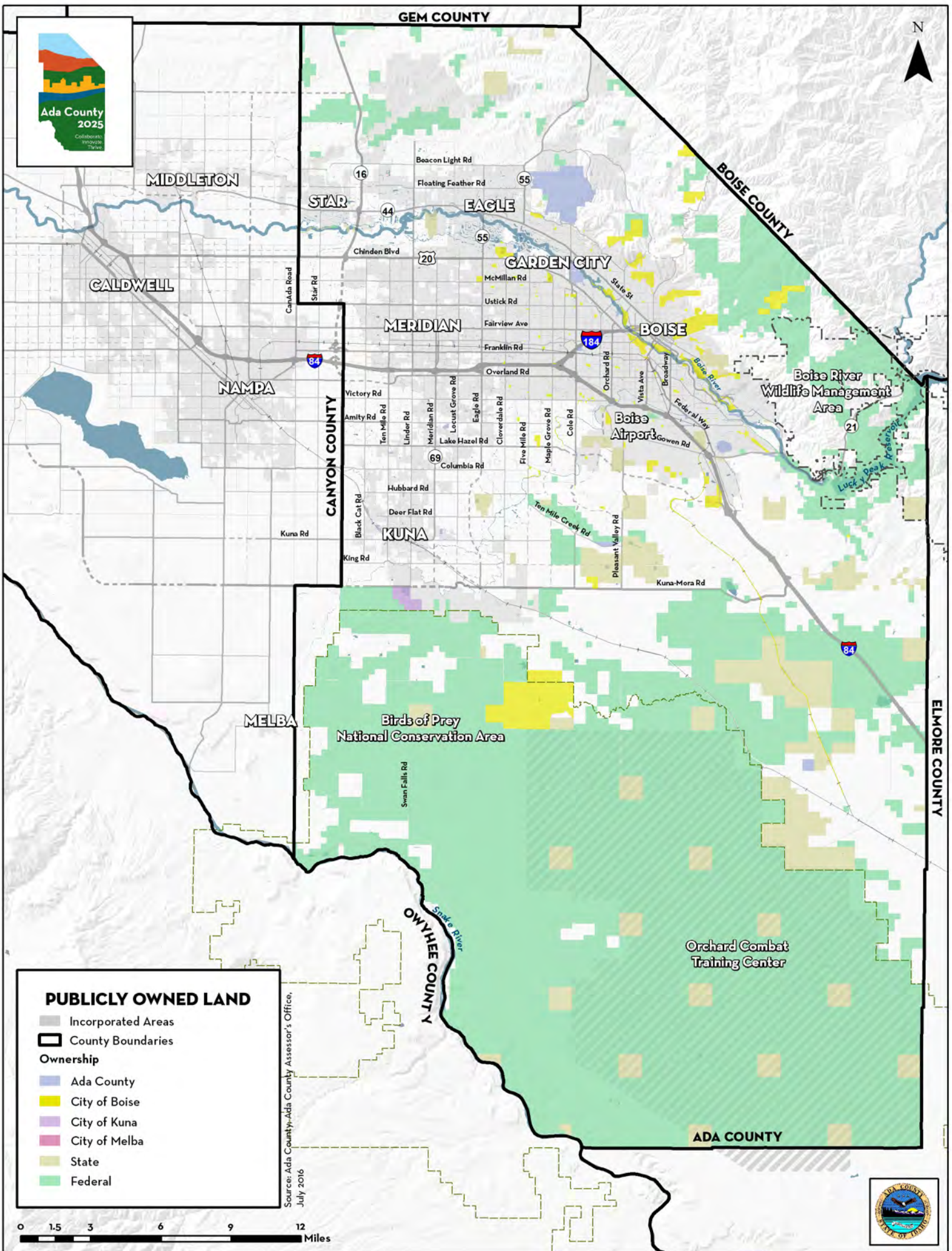
**High-Risk Areas**

- 100-year Floodplain
- Wildland Urban Fire Interface

Source: Ada County, COMPASS, and FEMA.  
July 2016



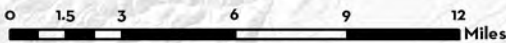




**PUBLICLY OWNED LAND**

- Incorporated Areas
- County Boundaries
- Ownership**
- Ada County
- City of Boise
- City of Kuna
- City of Melba
- State
- Federal

Source: Ada County-Ada County Assessor's Office,  
July 2016

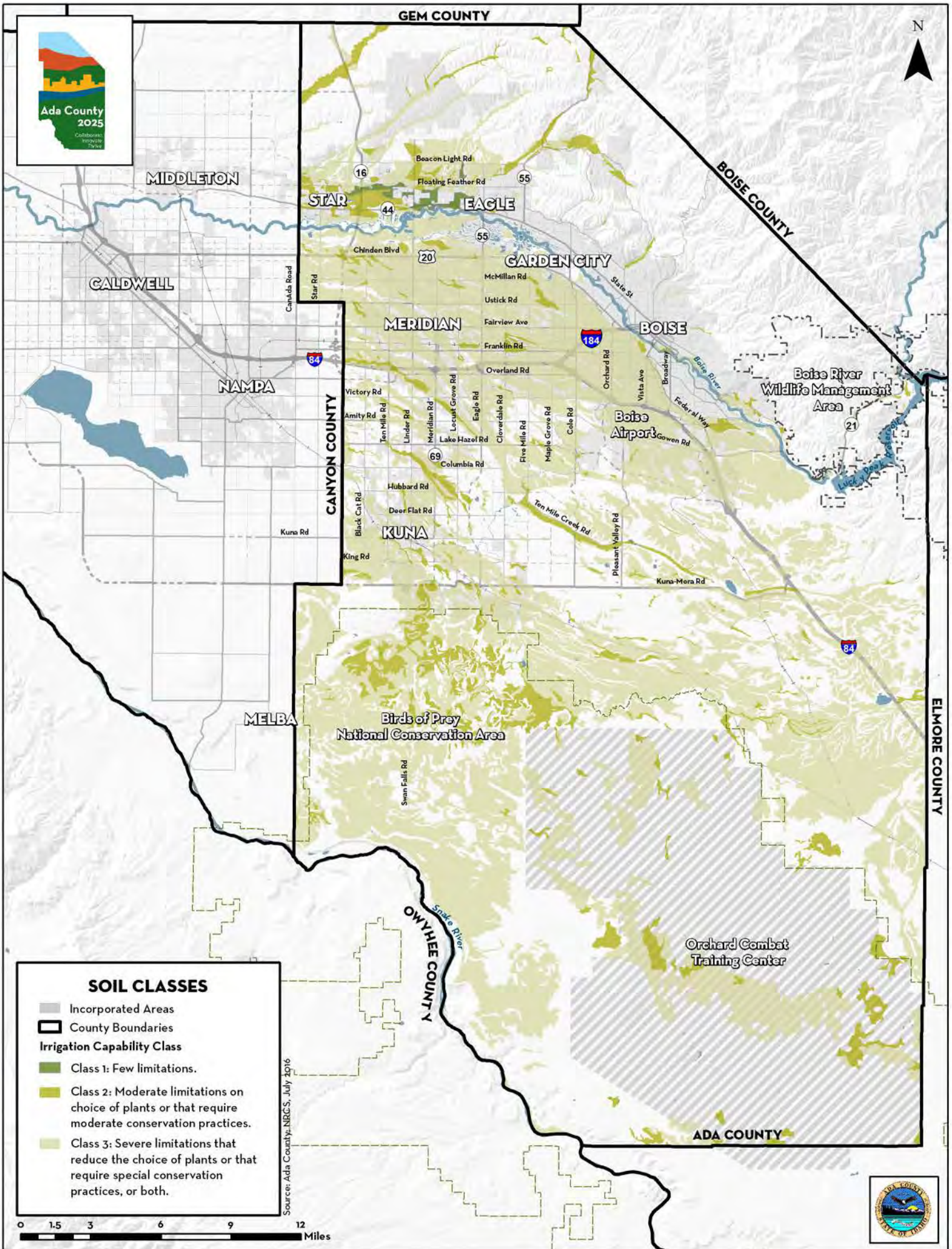






GEM COUNTY

N



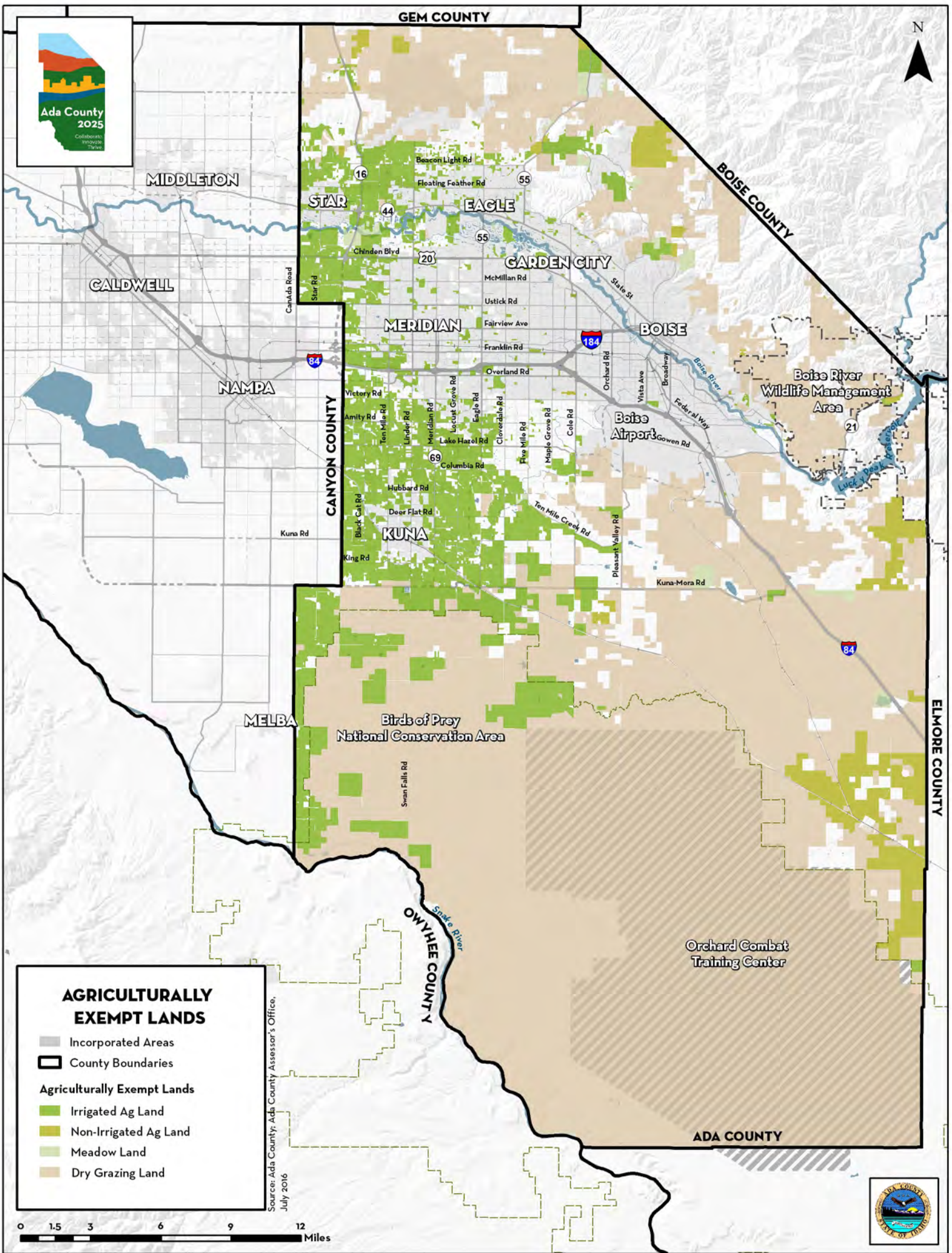
**SOIL CLASSES**

- Incorporated Areas
- County Boundaries
- Irrigation Capability Class**
- Class 1: Few limitations.
- Class 2: Moderate limitations on choice of plants or that require moderate conservation practices.
- Class 3: Severe limitations that reduce the choice of plants or that require special conservation practices, or both.

Source: Ada County-NRCS, July 2016







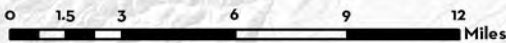
**AGRICULTURALLY EXEMPT LANDS**

- Incorporated Areas
- County Boundaries

**Agriculturally Exempt Lands**

- Irrigated Ag Land
- Non-Irrigated Ag Land
- Meadow Land
- Dry Grazing Land

Source: Ada County Assessor's Office, July 2016

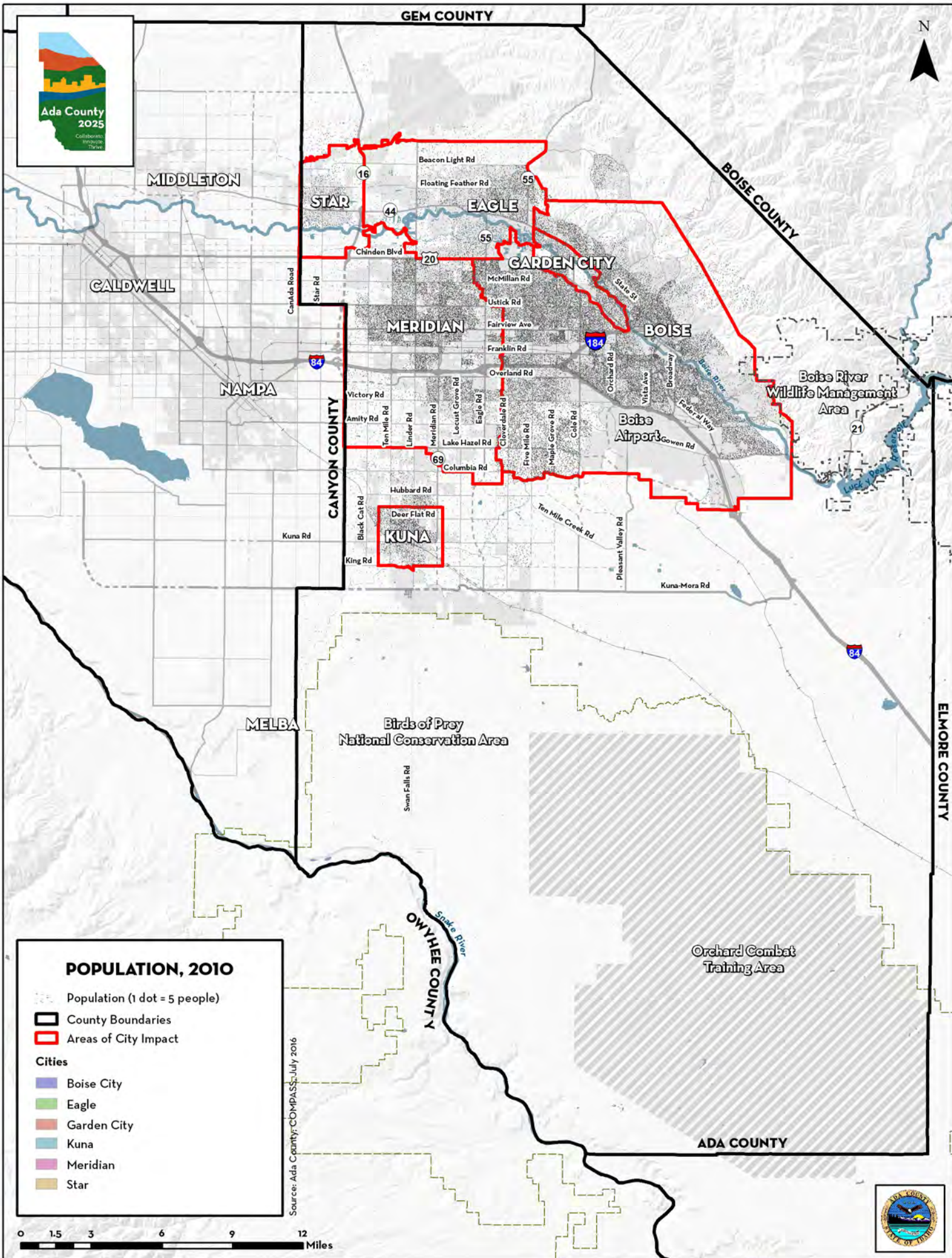






GEM COUNTY

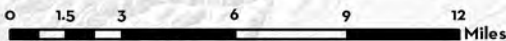
N



**POPULATION, 2010**

- Population (1 dot = 5 people)
- County Boundaries
- Areas of City Impact
- Cities**
- Boise City
- Eagle
- Garden City
- Kuna
- Meridian
- Star

Source: Ada County COMPASS, July 2016







GEM COUNTY

N

MIDDLETON

STAR

EAGLE

GARDEN CITY

CALDWELL

MERIDIAN

BOISE

NAMPA

CANYON COUNTY

KUNA

Boise River Wildlife Management Area

Boise Airport

MELBA

Birds of Prey National Conservation Area

Swan Falls Rd

OWYHEE COUNTY

ELMORE COUNTY

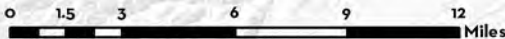
Orchard Combat Training Area

ADA COUNTY

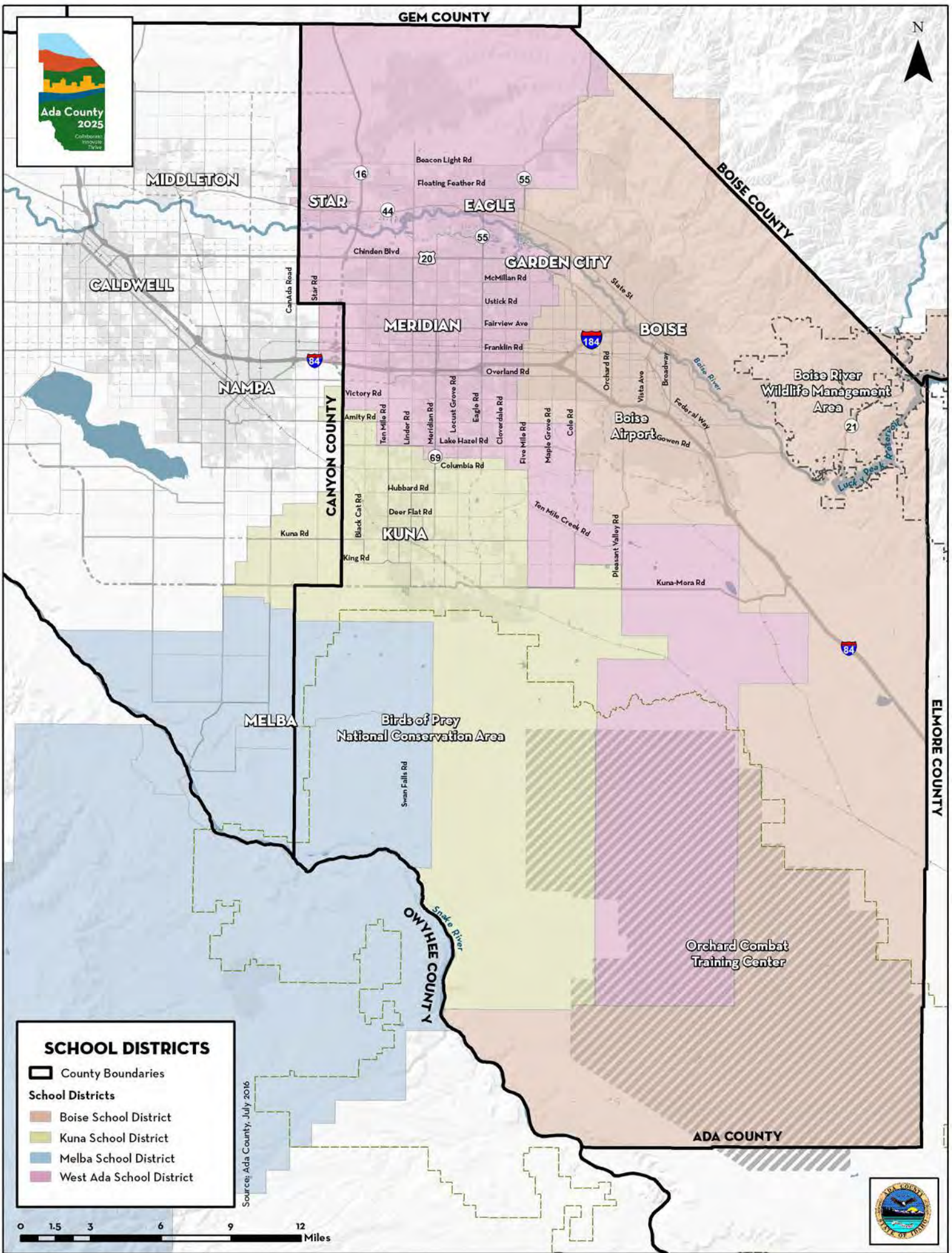
**POPULATION, 2040**

- Population (1 dot = 5 people)
- County Boundaries
- Areas of City Impact
- Cities**
- Boise City
- Eagle
- Garden City
- Kuna
- Meridian
- Star

Source: Ada County COMPASS, June 2016







**SCHOOL DISTRICTS**

- County Boundaries
- School Districts**
- Boise School District
- Kuna School District
- Melba School District
- West Ada School District

Source: Ada County, July 2016

